



Recommend Air Caps for Adhesives:

- 21-2263 (1.3 - 1.8 setup)**
- 21-2266-3T (1.3 - 1.8 setup)**
- 21-2167 (2.2 setup)**
- 21-2168 (2.8 setup)**

CONVENTIONAL AIR CAP AND FLUID NOZZLE CHART

MODEL NO.	PRESS / SIPHON	AIR CAP	FLUID TIP RANGE	FAN CONTROL	SCFM	AIR CAP RING	AVAILABLE FLUID NOZZLES	NEEDLES / marking on needle		
P100G	Siphon	21-2166	0.6 - 1.8	60-1500	5	included	17-4PH STAINLESS			
		21-2266	0.6 - 1.8		12		300 STAINLESS			
		21-2266T	0.6 - 1.8		12		31-0606	0.6mm (.022")	40-1107 (107)	
		21-2366	0.6 - 1.8		12		31-0607	0.7mm (.028")		
		21-2466	0.6 - 1.8		15		31-0610	1.0mm (.040")	40-1110 (110)	
		21-2467	2.2		15		31-0612	1.2mm (.046")		
		21-2268	2.8		15		31-0613	1.3mm (.052")		
	Pressure	21-2163	0.6 - 1.8		8		31-0615	1.5mm (.059")	40-1115 (115)	
		21-2263	0.6 - 1.8		14		31-0618	1.8mm (.070")		
		21-2266-3	0.6 - 1.8		16.2		31-0622	2.2mm (.086")	40-1122 (122)	
		21-2266-3T	0.6 - 1.8		16.2		31-0628	2.8mm (.110")	40-1128 (128)	
		21-2167	2.2		14.5		CARBIDE		CARBIDE	
		21-2267	2.2		15		31-0618V	1.8mm (.070")	40-6201	
		21-2168	2.8		14		31-0622V	2.2mm (.086")	40-6201	
	Internal Mix	21-2766B	1.0 - 1.8		8		31-0628V	2.8mm (.110")	40-6201	
		21-200**	1.5 - 1.8		5.2					
		21-2201**	2.2		5.2					

Actual fluid nozzle and air cap combinations are determined by application (see application chart page 4)

*Gun inlet pressures may vary as required by application

**200 Air cap requires P/N 21-1583 base & 21-1584 ring

Operation and Maintenance Instructions for *P100G* Spray Guns

Operation

1. Connect air supply hose at handle of gun.
2. Connect a pressurized fluid supply or paint siphon cup to the gun fluid inlet.
3. Fluid flow can be controlled using the fluid control knob, this restricts flow by limiting needle travel. It is best to control fluid flow by proper selection of fluid orifice size and use the fluid control knob to “fine tune flow rate”.
4. Fan width can be adjusted using the fan control knob. Turning the knob clockwise narrows the fan.

Maintenance

IMPORTANT! Routine cleaning and maintenance is essential to insure proper gun operation.

Several states prohibit spraying solvent into the atmosphere and require the use of covered gun cleaner.

1. If a gun cleaner is being used, connect and clean the gun in the gun cleaner according to the manufactures instructions.
2. If a gun cleaner is not being used:
Remove air cap and clean separately using clean solvent.
For pressure setups, connect a pressurized solvent supply to the fluid inlet, trigger the gun allowing solvent to flow thru the gun until clean.
For siphon setups, first clean the siphon cup thoroughly then spray clean solvent thru the gun until clean.

NOTE: Gun head disassembly is not recommended for normal cleaning and maintenance.

Gun head disassembly and reassembly instructions:

Have repair kit # 10-110 available before gun disassembly.

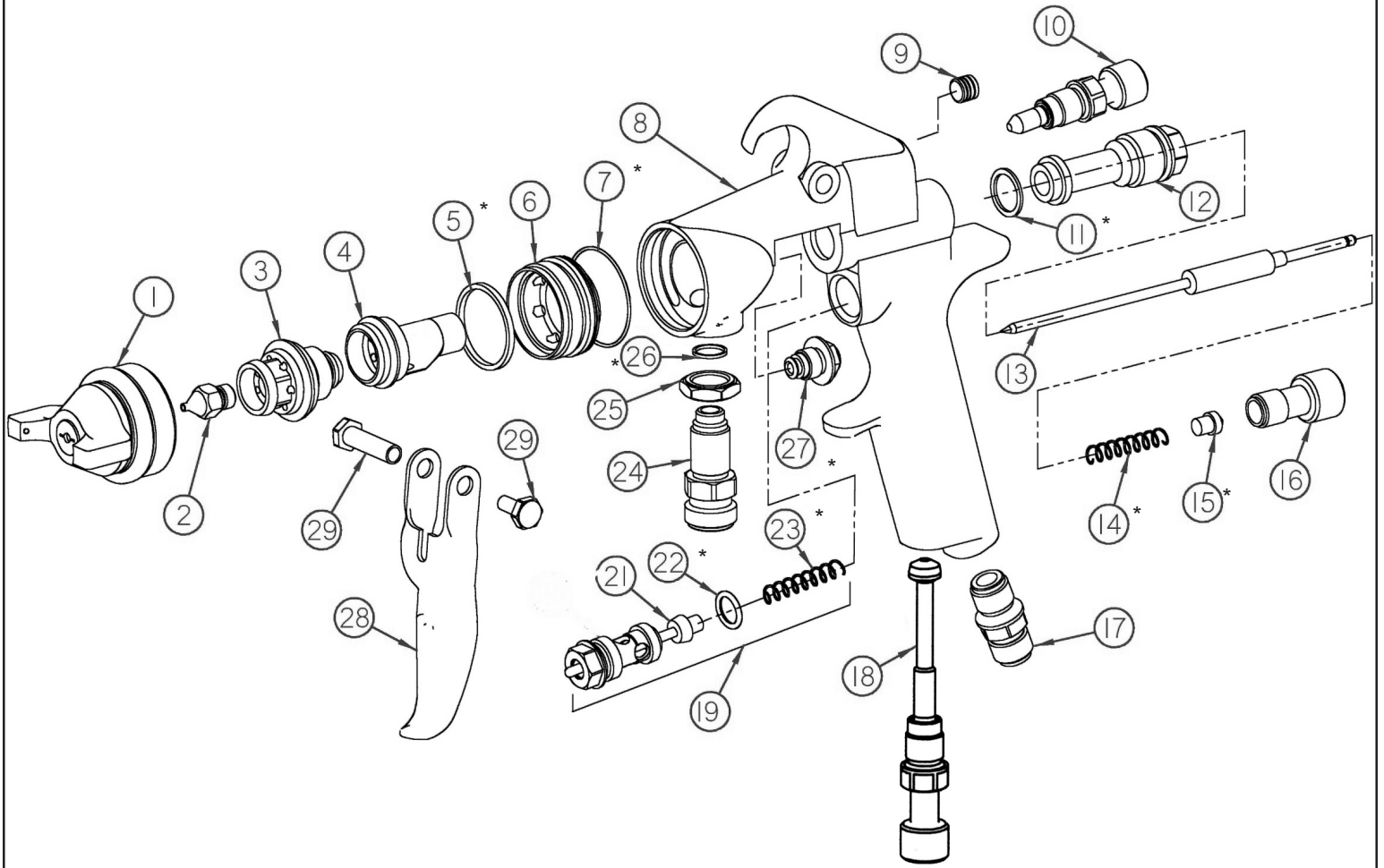
Gun head disassembly

To remove the nozzle carrier (4) and air cap adapter (6):

1. Remove the air cap (1), fluid nozzle tip (2), fluid nozzle body (3), and needle (13).
2. Remove the needle seal cartridge (27).
3. Loosen the locknut (25) and remove fluid inlet (24) using a 5/8” open-end wrench.
4. The nozzle carrier (4) and air cap adapter (6) will now slide forward from the gun body (8).

Gun head reassembly

1. Install a new o-ring (7) on the air cap adapter (6).
2. Install gasket (5) into the air cap adapter (6).
3. Install the thread locknut (25) onto the fluid inlet (24) as far as possible.
4. Install a new fluid inlet seal (26) into the recess area on the nozzle carrier (4) inlet port.
5. Slide the nozzle carrier (4) into air cap adapter (6) and insert into the gun body (8) as far as possible. Be sure the nozzle carrier (4) extends into the hole at the back of the gun head. Install the needle seal (27) but do not tighten.
6. Rotate the nozzle carrier (4) until the fluid inlet port in the nozzle carrier (4) is aligned with the threaded hole in the body. While in this position, insert the fluid inlet (24) and tighten firmly.
7. Tighten the needle seal (27) to approx. 12 ft.-lb. torque.
8. Tighten the fluid inlet (24) to approx. 25 ft.-lb. torque.
9. Tighten the locknut (25) to approx. 33 ft.-lb. torque.



ITEM NO.	PART NO.	DESCRIPTION	ITEM NO.	PART NO.	DESCRIPTION
1	See Air Cap Chart	Air Cap**	15	60-209	Spring Seat*
2	See Air Cap Chart	Fluid Tip**	16	60-202	Fluid Control Knob
3	31-2201	Fluid Nozzle Body	17	60-104	Air Inlet Fitting
4	60-L11C	Nozzle Body Carrier	18	60-1510	Inlet Air Control
5	61-1005	Seal*	19	60-1520	Air Valve Assembly
6	60-12C	Air Cap Adapter	21	60-302	Air Valve Poppet
7	60-131	O-Ring*	22	60-125	Seal*
8	60-1125	Panther Gun Body Conventional	23	61-1003	Air Valve Spring*
9	98-0109	Allen Plug	24	60-126	Fluid Inlet
10	See Air Cap Chart	Fan Control Assembly**	25	60-128	Locknut
11	60-119	Seal*	26	60-124	Seal*
12	60-201	Rear Bushing	27	60-1400	Needle Seal*
13	See Air Cap Chart	Fluid Needle**	28	60-2101	Trigger
14	60-206	Needle Return Spring (HD)*	29	60-1033	Trigger Pivot Set

**See air cap selection chart on page 1

*Indicates part included in repair kit # 10-110

FLUID NOZZLE / AIR CAP SELECTION CHARTS

PANTHER Series 100G - Pressure / Siphon Feed Guns

P100G CONVENTIONAL SPRAY GUN

MATERIAL TYPE	FLUID ORIFICE x AIR CAP	MAXIMUM PATTERN WIDTH	PRESS. / SIPHON
Very Thin less than 16 sec. Zahn #2 inks , dyes, solvents, stains	0.6, 0.7 mm x 2163	8	P
	0.6, 0.7 mm x 2166	9	S
	0.6, 0.7 mm x 2266T	12	S
Thin 16 to 20 sec. Zahn #2 lacquers, enamels, primers, sealers	0.6, 0.7, 1.0 mm x 2163	8	P
	0.6, 0.7, 1.0 mm x 2366	14	S
	0.6, 0.7, 1.0 mm x 2466	13	S
Medium 21 to 30 sec. Zahn #2 automotive base coat enamels, primers epoxies, urethanes automotive clear coat	1.2, 1.3, 1.5, 1.8 mm x 2263	14	P
	1.2, 1.3, 1.5, 1.8 mm x 2266T	10	S
	1.2, 1.3, 1.5, 1.8 mm x 2266-3T	15	S
	1.2, 1.3, 1.5, 1.8 mm x 2466	13	S
Heavy over 30 sec. Zahn #2 heavy body primers high solid enamels high solid automotive coatings adhesives	1.5, 1.8mm x 2466	13	S
	2.2 mm x 2167	12	P
	2.2 mm x 2267	15	P
	2.8 mm x 2168	12	P



2.5 GALLON SS (NON-ASME)
STAINLESS STEEL NON AGITATED PRESSURE TANK
PRODUCT INFORMATION

DISTRIBUTED BY:
Pro Wood Finishes
14622 Southlawn Lane
Rockville MD 20850
Ph: (301) 424-3033



51-801 SINGLE REGULATED
51-802 DOUBLE REGULATED

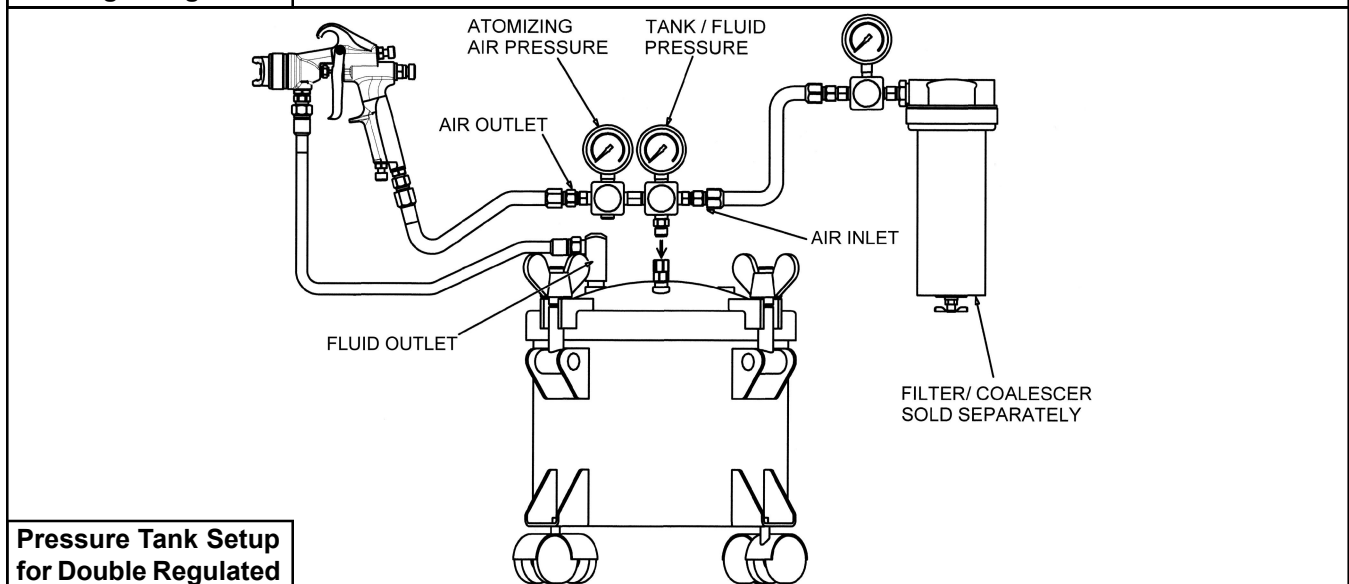
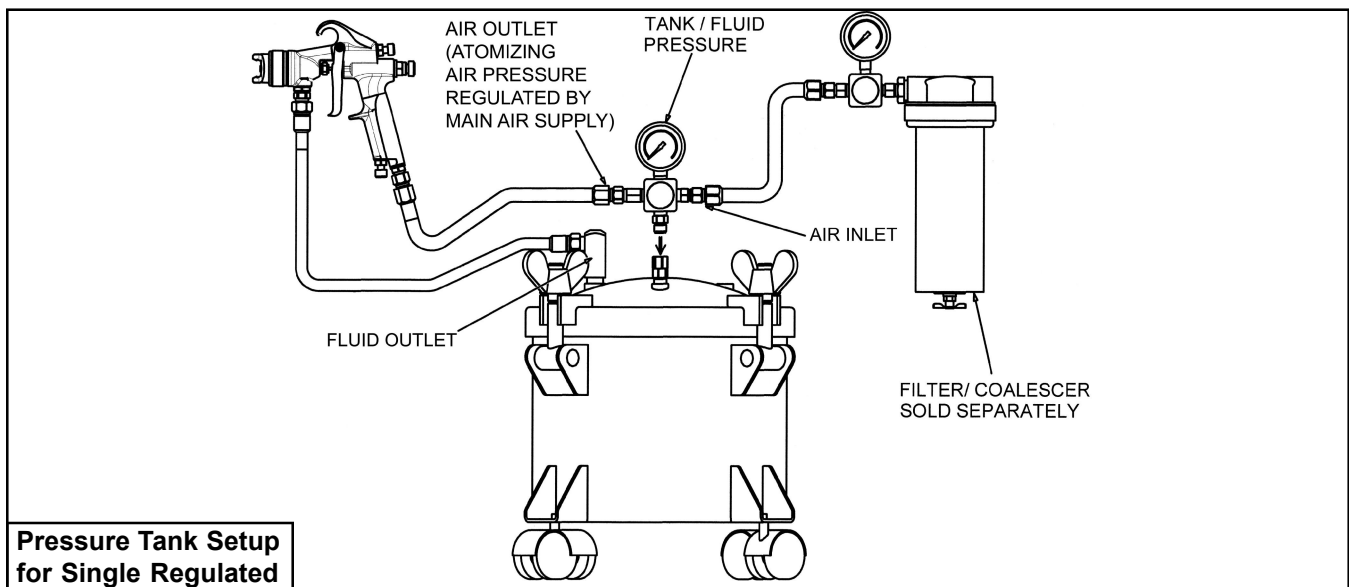
IMPORTANT NOTE: IF THIS PRESSURE TANK IS TO BE USED FOR SPRAYING FLAMMABLE MATERIALS, OPERATOR MUST NOT PRESSURIZE THIS TANK MORE THAN 15 PSI TO MEET OSHA REQUIREMENTS. FOR NON-ASME PRESSURE VESSELS. IT IS THE RESPONSIBILITY OF THE OPERATOR TO FOLLOW THIS MANDATORY PROCEDURE.

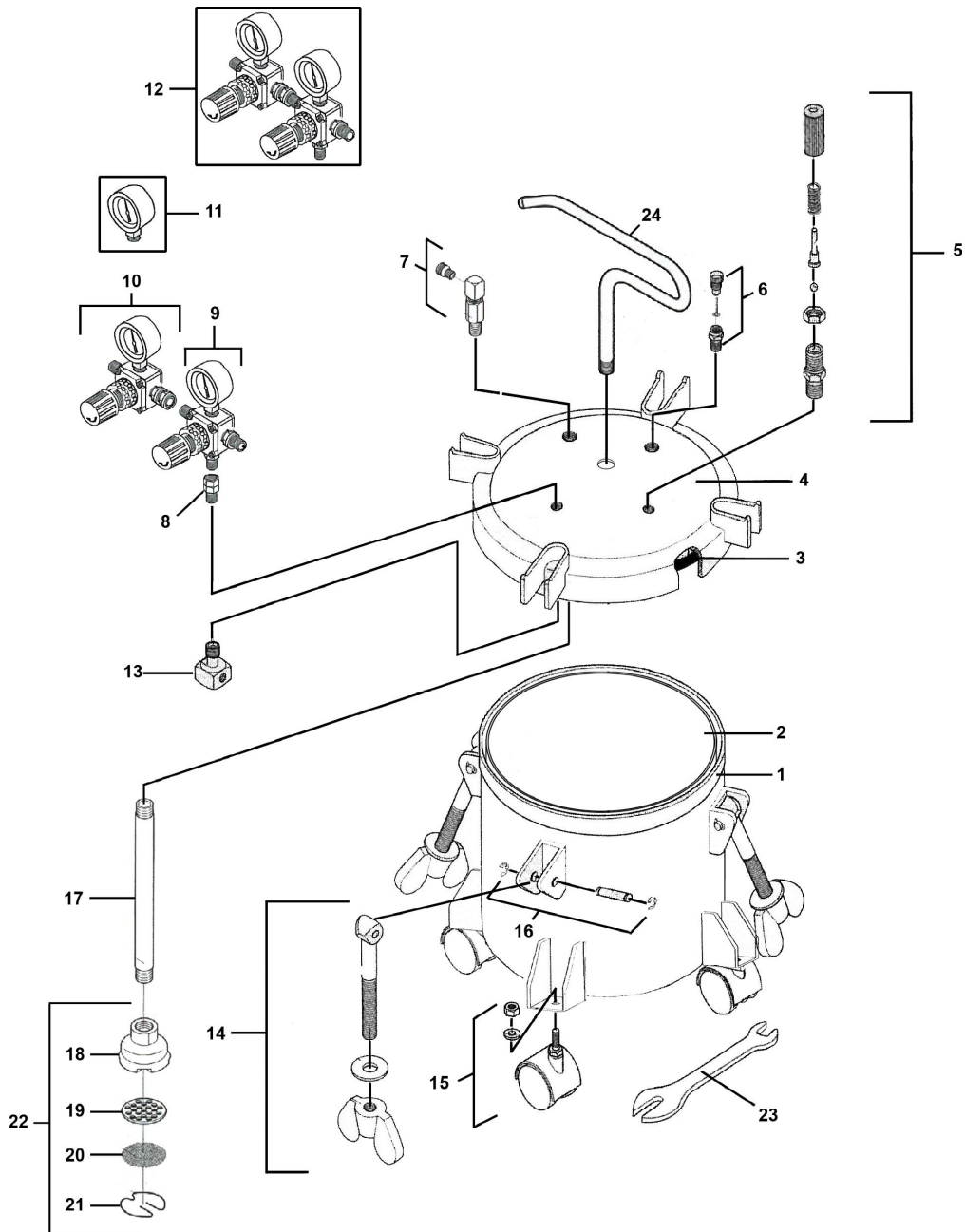
GENERAL INFORMATION

This pressure tank is equipped with either single or double air pressure regulation, pressure safety relief valve, tank vent valve, a disposable plastic liner, and four caster wheels.

CAUTION!

1. Maximum tank pressure of 80 psi. The safety relief valve is designed to protect the tank against excessive pressures. **DO NOT** attempt to make adjustments to this valve. If this valve begins to vent air, reduce the setting on the air inlet regulator.
2. **DO NOT** alter the tank in any way by welding, drilling or machining as this may weaken the structure of the tank.
3. To prevent hazardous static sparks from occurring, always ground the tank by connecting a 12 ga. wire to the tank and to a known earth ground.
4. Halogenated solvents will react chemically with aluminum and may cause an explosion. Examples of halogenated solvents are 111 trichlorethane and methylene chloride. **DO NOT use the removable aluminum tank liner with any halogenated solvents.**
5. Be sure tank pressure is completely relieved before attempting to remove tank cover or material fill cap. Shut off the main air supply to the tank and vent pressure using the vent valve located on the tank lid.





ITEM NO.	PART NO.	DESCRIPTION	ITEM NO.	PART NO.	DESCRIPTION
1	51-226SS	Tank Shell	13	51-237	Air Flow Diffuser
2	51-261	Disposable Rigid Liners (12 or 60 pk)	14	51-236	Eye Bolt Assembly
	51-231	Disposable Bag Liners (10 pk)	15	51-224	Caster (4 Req'd)
	51-227	Stainless Steel Tank Liner		51-252	Optional Stationary Feet (4 Req'd)
3	51-220	Gasket	16	51-233	Pin Assembly
4	51-228SS	Tank Lid Assembly	17	51-223SS	Fluid Pickup Tube
5	51-229	Safety Relief Valve Assembly	18	51-256	Inlet Strainer Body
6	51-234	Tank Vent Valve	19	51-254	Inlet Screen Backup Plate
7	51-230SS	Material Outlet Valve	20	51-248	Inlet Screen
8	51-280	Swivel Connection	21	51-255	Inlet Retainer Clip
9	52-10A	Fluid Regulator Assembly	22	51-232	Inlet Strainer Assembly
10	52-11A	Atomizing Air Regulator Assembly	23	51-225	Wrench
11	52-58	Pressure Gauge	24	51-235SS	Handle
12	52-303	Dual Regulator Assembly			

Single regulated supplied with item 9, double regulated supplied with items 9 & 10

Pressure Tanks Available From C.A. Technologies



2.5 Gallon Pressure Tank
51-201 Single Regulated
51-202 Double Regulated



2.5 Gallon Pressure Tank
With Air Powered Agitation
51-203 Single Regulated
51-204 Double Regulated



5 Gallon Pressure Tank
With No Agitation
51-507 Single Regulated
51-508 Double Regulated



5 Gallon Pressure Tank
With Manual Agitation
51-501 Single Regulated
51-502 Double Regulated



5 Gallon Pressure Tank
With Air Powered Agitation
51-503 Single Regulated
51-504 Double Regulated



10 Gallon Pressure Tank
With No Agitation
51-551 Single Regulated
51-552 Double Regulated



10 Gallon Pressure Tank
With Manual Agitation
51-557 Single Regulated
51-558 Double Regulated



10 Gallon Pressure Tank
With Air Powered Agitation
51-553 Single Regulated
51-554 Double Regulated