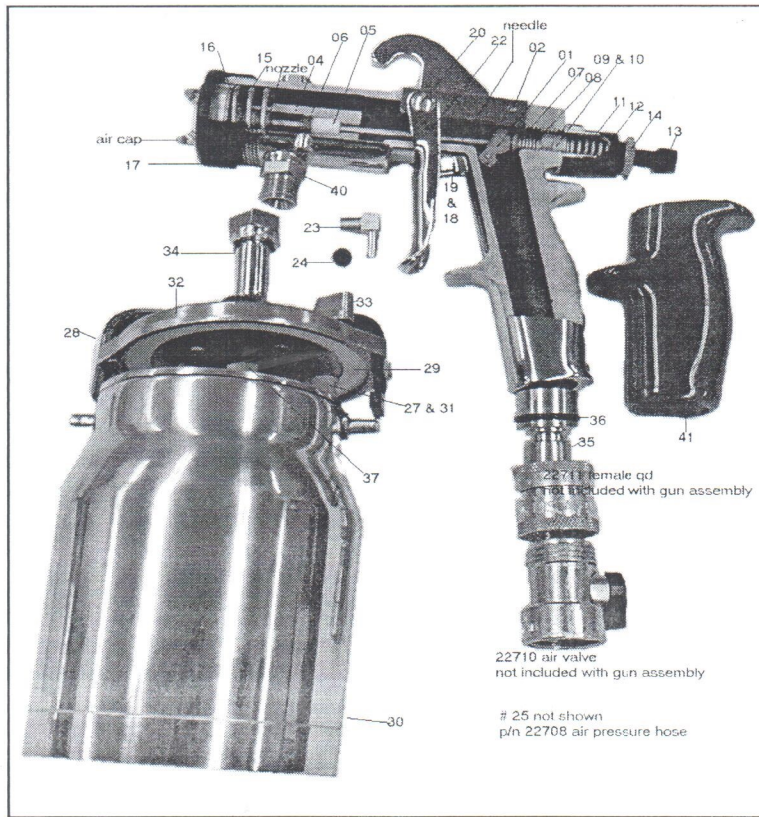


Gun Diagram

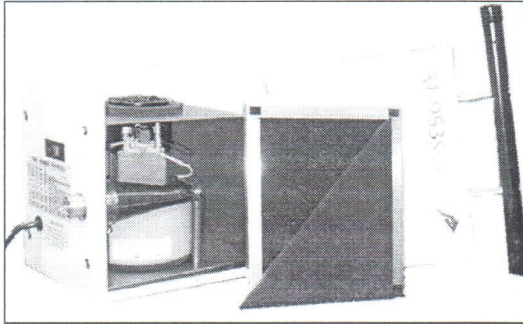


| Ref. # | Part # | Description | Ref. # | Part # | Description | Ref.# | Part # | Description |
|--------|--------|--------------------------|--------|--------|-----------------------|-------|--------|--------------------------|
| | 22000 | Gun Body Only | 14 | 22014 | Locking Ring | 28 | 22700 | Bridge |
| 1 | 22001 | Actuator | 15 | 22015 | Spring Detent Plate | 29 | 22706 | Gasket |
| 2 | 22002 | Actuator Pin | 16 | 22016 | Detent Plate | 30 | 22705 | 1 Qt. Cup |
| 3 | 22003 | Nozzle Holder Complete | 17 | 22017 | Pattern Control Ring | 31 | 22726 | Pressure Hose Lower-Blue |
| 4 | 22004 | Nozzle Holder Only | 18 | 22018 | Trigger Pin Guide | 32 | 22703 | Cover |
| 5 | 22005 | Packing (5 piece) | 19 | 22019 | Trigger Pin | 33 | 22702 | Lever |
| 6 | 22006 | Packing Adjustment Screw | 20 | 22021 | Trigger Screw | 34 | 22704 | Pick Up Tube |
| 7 | 22007 | Driving Ring | 21 | 22707 | Set Screw Gun to QD | 35 | 22712 | Gun Male QD |
| 8 | 22008 | Driving Ring Spring | 22 | 22020 | Trigger | 36 | 22721 | O Ring for QD |
| 9 | 22009 | Adjustment Drum | 23 | 22714 | Barbed Elbow | 37 | 22701 | Nut Pick Up Tube |
| 10 | 22010 | Locking Nut | 24 | 22709 | Plug for Pressure Gun | 38 | | N/A |
| 11 | 22011 | Needle Return Spring | 25 | 22708 | Hose to Pressure Cup | 39 | | N/A |
| 12 | 22012 | Body Material Control | 26 | 22725 | Hose Barb Cup Lid | 40 | 22022 | Fluid Fitting |
| 13 | 22013 | Adjustment Screw | 27 | 22727 | Elbow Cup Lid | 41 | 22715 | Grip |

AMERICAN TURBINE TURBINE UNIT REPAIR PARTS

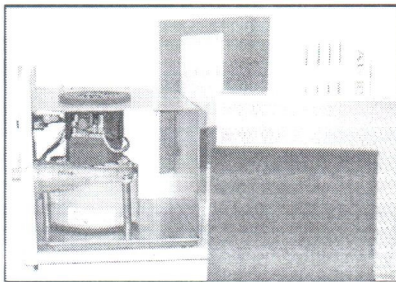
*This list of parts represents the most common repair and replaceable parts for the unit listed.

AT 950 & AT 953



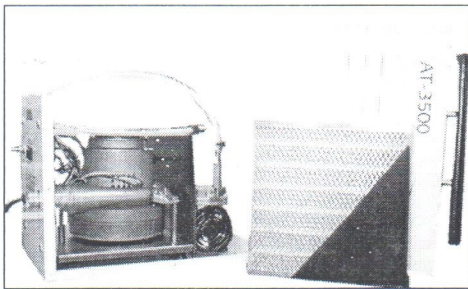
| | | |
|-------------|-------|-------|
| Turbine | 30057 | 30058 |
| Switch | 51065 | 51065 |
| Power Cord | 51029 | 51029 |
| Main Filter | 30099 | 30099 |
| Pre-Filter | 30098 | 30098 |

AT1000 AT1000+ AT3000 AT4000



| | | | | |
|-------------|---------|---------|---------|---------|
| Turbine | 30057 | 30058 | 30073 | 30074 |
| Switch | 51065 | 51065 | 51065 | 51065 |
| Power Cord | 51029 | 51029 | 51029 | 51029 |
| Main Filter | 51030 | 51030 | 51030 | 51030 |
| Pre-Filter | 51031-1 | 51031-1 | 51031-1 | 51031-1 |

AT 1500 AT1500+ AT3500 AT3550



| | | | | |
|--------------|-------|-------|-------|-------|
| Turbine | 30057 | 30058 | 30073 | 30073 |
| Switch | 51065 | 51065 | 51065 | 51065 |
| Power Cord | 51029 | 51029 | 51029 | 51029 |
| Comp. Switch | 51075 | 51075 | 51075 | 51075 |
| Main Filter | 51030 | 51030 | 51030 | 51030 |
| Pre-Filter | 51031 | 51031 | 51031 | 51031 |
| Compressor | 51073 | 51073 | 51073 | 51073 |
| Dump Valve | 22747 | 22747 | 22747 | 22747 |

The following needles and nozzles are sold separately. Use the specific part number which corresponds with the correct size needle or nozzle.

Needles



Nozzles

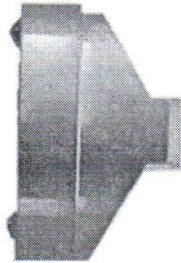


| Needle Size mm | Part Number | Nozzle Size mm | Part Number |
|----------------|-------------|----------------|-------------|
| 0.5 | 22101 | 0.5 | 22115 |
| 0.7 | 22102 | 0.7 | 22116 |
| 1.0 | 22103 | 1.0 | 22117 |
| 1.2 | 22104 | 1.2 | 22118 |
| 1.4 | 22105 | 1.4 | 22119 |
| 1.6 | 22106 | 1.6 | 22120 |
| 1.8 | 22107 | 1.8 | 22121 |
| 2.0 | 22108 | 2.0 | 22122 |
| 2.4 | 22109 | 2.4 | 22123 |
| 2.8 | 22110 | 2.8 | 22124 |

The following air caps are sold separately. (Unlike the needle and nozzles, **air caps can be of a different size**)

1. The smaller numbered air cap will break the material being sprayed into smaller particles for a finer finish.
2. Larger numbered air cap may reduce the amount of over spray mist.
3. For fine finish work, it is recommended that a multi-hole air cap be used.

Air Caps



| Standard Air Cap | | Multi Hole Air Cap | |
|------------------|-------------|--------------------|-------------|
| Size mm | Part Number | Size mm | Part Number |
| 0.5 | 22128 | 0.5 | 22140 |
| 0.7 | 22129 | 0.7 | 22141 |
| 1.0 | 22130 | 1.0 | 22142 |
| 1.2 | 22131 | | |
| 1.4 | 22132 | | |
| 1.6 | 22133 | | |
| 1.8 | 22134 | | |
| 2.0 | 22135 | | |
| 2.4 | 22136 | | |
| 2.8 | 22137 | | |

For fine finish work, a **multi-hole** air cap is recommended.