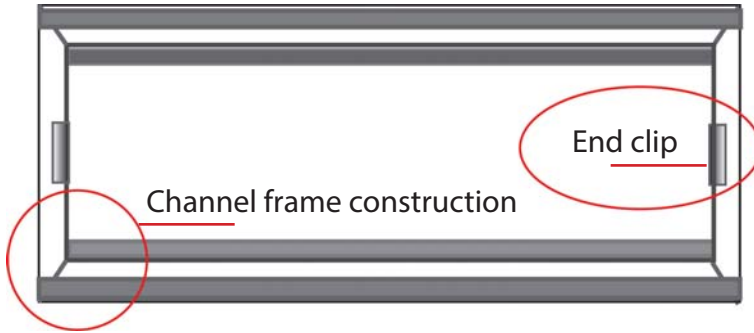


# the accordion

## PAINT BAFFLE

### INSTALLATION INSTRUCTIONS

Cross-draft exhaust frame opening



#### Measure baffle length

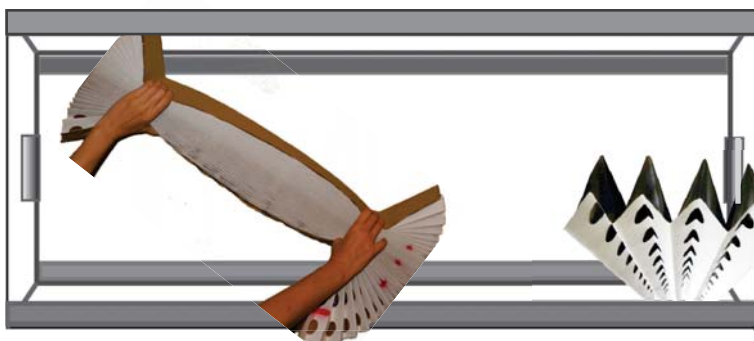
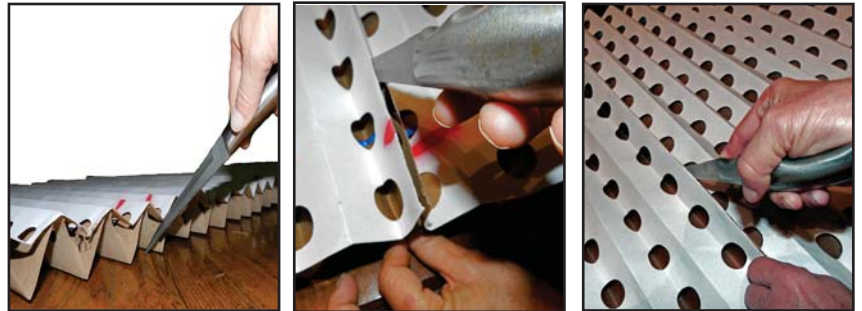
- Measure length of exhaust frame opening.
- Count a red mark for each foot (or meter) and cut baffle to length.



#### Cut baffle to length

*Tip: point tip of knife to table or floor.*

- Slide knife under the pleat.
- Pinch pleats on either side of knife blade to start cut.
- Pinch top pleat to guide knife.



#### Insert baffle in frame

- Gather baffle and insert in frame.
- Tilt baffle to insert behind front "lip" of frame and release.
- Tuck end pleats behind end clips.

\*Optimal extension: 8 pleats per foot (26 pleats per meter).

#### How to install baffle supports

*Baffle supports are required for multi-cell frames (pads).*

- Flex bent tines of support inward to create an 1/8" gap between the frame and the support. This creates space for the end pleat.
- Tilt support to hook top tines behind the frame.
- Slide support up to fit bottom tines behind the frame. (Bent tines will be in front of the frame.)
- Slide support to center in frame opening.

Single exhaust cell frame opening

