

# Panther 100G

## 100 Series Teflon Coated Conventional

The Panther 100G is a high quality general purpose sprayer designed for spraying adhesives. Complete with an all stainless steel fluid passage, this spray gun is perfect for all coatings from thin to thick.

## Panther 100G

### Features

- ➔ Forged Aluminum Body
- ➔ Stainless Steel Fluid Passages
- ➔ Heavy Duty Needle Spring
- ➔ Teflon Hard Coat Gun Body
- ➔ Teflon Hard Coat Air Cap



1 Quart  
Pressure Cup  
(Aluminum)

**OP100G-18-2266-3T-350R**

## Panther 100G

*"Teflon Coated Durability"*

### Available Outfits

#### 2 Quart Outfits

(Includes 5' Hose Assemblies)



2 Quart  
(Economy)

**OP100G-130**



2 Quart  
(Bandit)

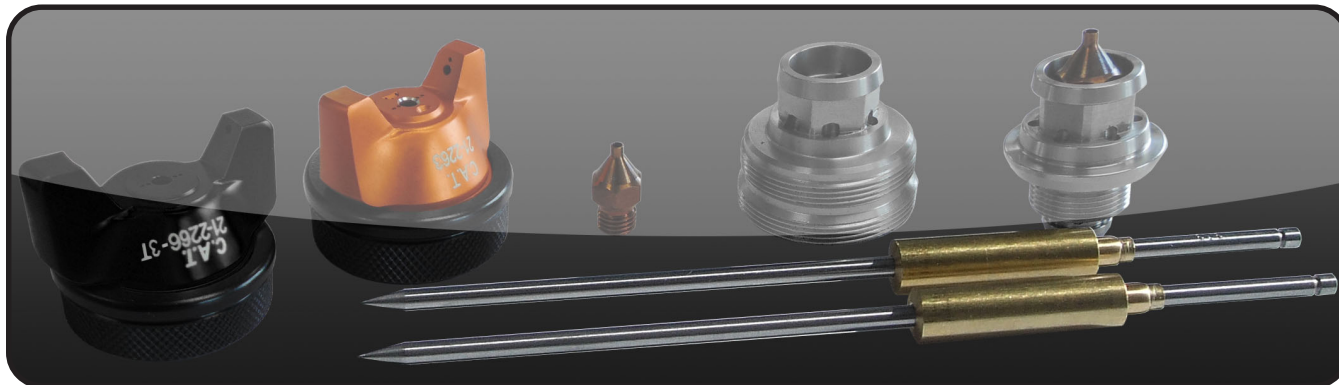
**OP100G-600**

#### Tank Outfits

Tank Outfits Include 25' Hose Assemblies and are available in 2.5 gal, 5 gal, 10 gal, 12.5 gal and 15 gal sizes.

(Includes 25' Hose Assemblies)





### Nozzle Chart for *Panther100G*

| Material Type   | Fluid Orifice x Air Cap         | Maximum Pattern Width | Pressure / Siphon |
|---|---------------------------------|-----------------------|-------------------|
| <b>Very Thin</b><br>less than 16 sec. Zahn #2<br>inks, dyes, solvents, stains   | 0.6, 0.7 mm x 2163              | 8                     | P                 |
|   | 0.6, 0.7 mm x 2166              | 9                     | S                 |
|   | 0.6, 0.7 mm x 2266T             | 12                    | S                 |
| <b>Thin</b><br>16 to 20 sec. Zahn #2<br>lacqers, enamels, primers,<br>sealers   | 0.6, 0.7, 1.0 mm x 2163         | 8                     | P                 |
|   | 0.6, 0.7, 1.0 mm x 2366         | 14                    | S                 |
|   | 0.6, 0.7, 1.0 mm x 2466         | 13                    | S                 |
| <b>Medium</b><br>21 to 30 sec. Zahn #2<br>automotive base coat<br>enamels, primers, epoxies,<br>urethanes, automotive<br>clear coat | 1.2, 1.3, 1.5, 1.8 mm x 2263    | 14                    | P                 |
|   | 1.2, 1.3, 1.5, 1.8 mm x 2266T   | 10                    | S                 |
|   | 1.2, 1.3, 1.5, 1.8 mm x 2266-3T | 15                    | P/S               |
|   | 1.2, 1.3, 1.5, 1.8 mm x 2466    | 13                    | S                 |
| <b>Heavy</b><br>over 30 sec. Zahn #2<br>heavy body primers, high<br>solid enamels, high solid<br>automotive coatings,<br>adhesives  | 1.5, 1.8 mm x 2466              | 13                    | S                 |
|   | 2.2 mm x 2167                   | 12                    | P                 |
|   | 2.2 mm x 2267                   | 15                    | P                 |
|   | 2.8 mm x 2168                   | 12                    | P                 |

### Common Air Caps for *Panther100G*

| Air Caps   | Pressure / Siphon | Max Inlet Pressure | CFM @ Max Inlet Pressure |
|------------|-------------------|--------------------|--------------------------|
| 21-2266T   | Siphon            | 50 PSI             | 12 CFM @ 50 PSI          |
| 21-2266-3T | Pressure          | 50 PSI             | 16.2 CFM @ 50 PSI        |
| 21-2263    | Pressure          | 50 PSI             | 14 CFM @ 50 PSI          |
| 21-2166    | Siphon            | 50 PSI             | 5 CFM @ 50 PSI           |
| 21-2366    | Siphon            | 50 PSI             | 12 CFM @ 50 PSI          |
| 21-2466    | Siphon            | 50 PSI             | 15 CFM @ 50 PSI          |
| 21-2167    | Pressure          | 50 PSI             | 14.5 CFM @ 50 PSI        |
| 21-2267    | Pressure          | 50 PSI             | 15 CFM @ 50 PSI          |
| 21-2168    | Pressure          | 50 PSI             | 14 CFM @ 50 PSI          |