

TOMCAT

100 Series Conventional General Purpose

The Tomcat is a price competitive and high quality production sprayer. It is designed for the painter who wants a conventional gun for spraying a wide range of coatings from glue to fine finish... The Tomcat can handle it all.

TOMCAT Features

- ➔ Economically priced
- ➔ General purpose spray gun with a wide range of fluid nozzles and air caps
- ➔ Standard pressure setup (1.2 x 2263)
- ➔ Standard siphon setup (1.8 x 2266)



1 Quart
 Pressure Cup
 (Aluminum)
OT100C-303R2



1 Quart
 Siphon Cup
 (Aluminum)
OT100C-301

Quality
Simplicity
Reliability

Available Outfits

2 Quart Outfits

(Includes 5' Hose Assemblies)



2 Quart
 (Economy)
OT100C-130



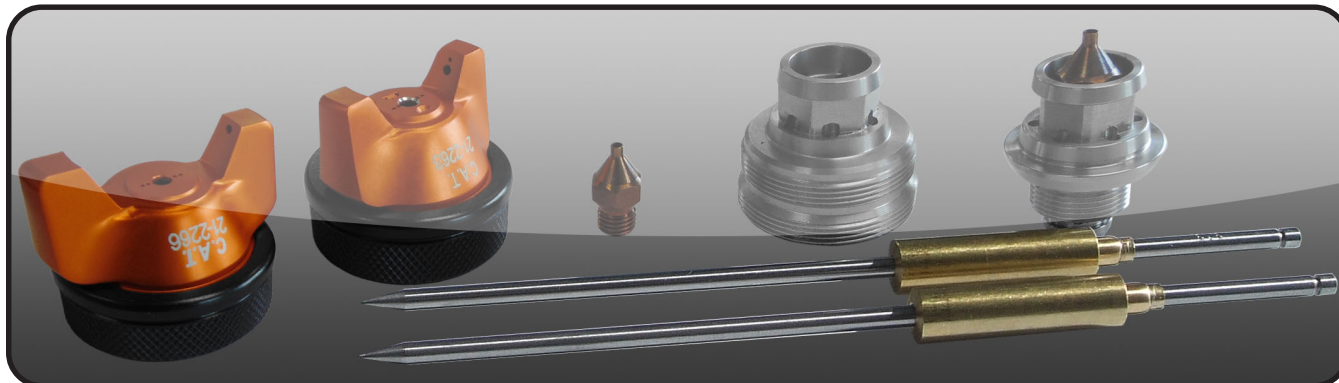
2 Quart
 (Bandit)
OT100C-600

Tank Outfits

Tank Outfits Include 25' Hose Assemblies and are available in 2.5 gal, 5 gal, 10 gal, 12.5 gal and 15 gal sizes.

(Includes 25' Hose Assemblies)





Nozzle Chart for **TOMCAT**

Material Type	Fluid Orifice x Air Cap	Maximum Pattern Width	Pressure / Siphon
Very Thin less than 16 sec. Zahn #2 inks, dyes, solvents, stains	0.6, 0.7 mm x 2163	8	P
	0.6, 0.7 mm x 2166	9	S
	0.6, 0.7 mm x 2266	12	S
Thin 16 to 20 sec. Zahn #2 lacqers, enamels, primers, sealers	0.6, 0.7, 1.0 mm x 2163	8	P
	0.6, 0.7, 1.0 mm x 2366	14	S
	0.6, 0.7, 1.0 mm x 2466	13	S
Medium 21 to 30 sec. Zahn #2 automotive base coat enamels, primers, epoxies, urethanes, automotive clear coat	1.2, 1.3, 1.5, 1.8 mm x 2263	14	P
	1.2, 1.3, 1.5, 1.8 mm x 2266	10	S
	1.2, 1.3, 1.5, 1.8 mm x 2266-3	15	S
	1.2, 1.3, 1.5, 1.8 mm x 2466	13	S
Heavy over 30 sec. Zahn #2 heavy body primers, high solid enamels, high solid automotive coatings, adhesives	1.5, 1.8 mm x 2466	13	S
	2.2 mm x 2167	12	P
	2.2 mm x 2267	15	P
	2.8 mm x 2168	12	P

Common Air Caps for **TOMCAT**

Air Caps	Pressure / Siphon	Max Inlet Pressure	CFM @ Max Inlet Pressure
21-2263	Pressure	50 PSI	14 CFM @ 50 PSI
21-2166	Siphon	50 PSI	5 CFM @ 50 PSI
21-2266	Siphon	50 PSI	12 CFM @ 50 PSI
21-2266-3	Pressure	50 PSI	16.2 CFM @ 50 PSI
21-2366	Siphon	50 PSI	12 CFM @ 50 PSI
21-2466	Siphon	50 PSI	15 CFM @ 50 PSI
21-2167	Pressure	50 PSI	14.5 CFM @ 50 PSI
21-2267	Pressure	50 PSI	15 CFM @ 50 PSI
21-2168	Pressure	50 PSI	14 CFM @ 50 PSI