

DISTRIBUTED BY:  
Pro Wood Finishes  
14622 Southlawn Lane  
Rockville MD 20850  
Ph: (301) 424-3033



 **TEKNA**<sup>®</sup>  
**PROLITE**



Optimized  
Performance  
**For Advanced  
Atomization**



# Advanced Atomization Technology For Fine Finishing Applications

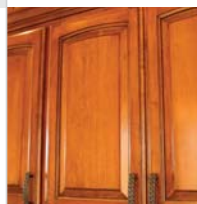


- High transfer efficiency for increased material savings
- HVLP and High Efficiency Air Caps designed for Class A finishes
- Uniform spray pattern yields optimum metallic control

## Air Cap Selection Guide

	Gravity & Pressure Feed			Pressure Feed Only	
	TE10	TE20	HV30	TE40	HV40
Model No.	PRO-103-TE10	PRO-103-TE20	PRO-103-HV30	PRO-103-TE40	PRO-103-HV40
Technology	High Efficiency	High Efficiency	HVLP	High Efficiency	HVLP
Pattern Size	10-12" long	10-12" long	12-14" long	11-13" long	11-13" long
Typical Fluid Flow - oz./min	5-12	5-12	5-12	5-16	5-12
Air Consumption	7.5-11 CFM	12-19 CFM	16.5 CFM @ 10 PSI Air Cap	13-19 CFM	17 PSI @ 10.5 CFM

WOODWORKING



AEROSPACE



TRANSPORTATION



GENERAL INDUSTRIAL



TEKNA ProLite Models Are Compatible With Both Waterborne And Solvent Borne Coatings

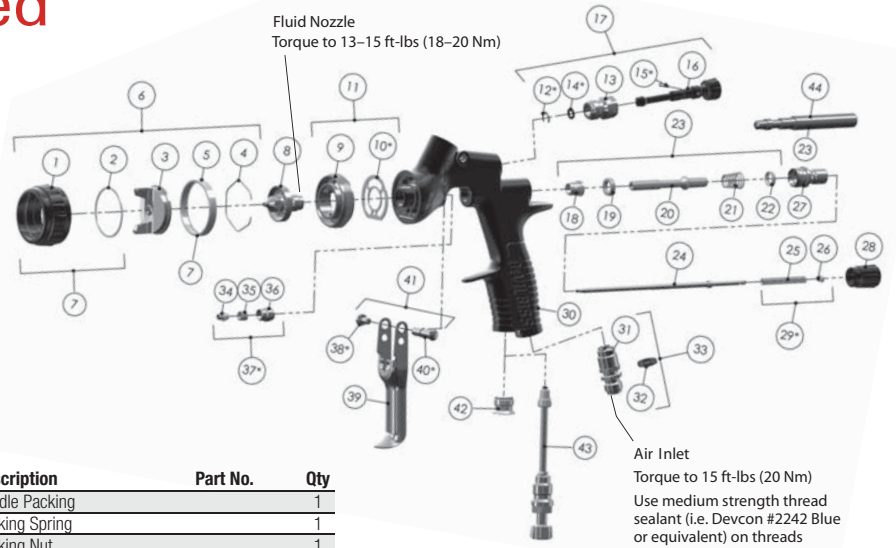
### Typical Applications Include:

Wood, General Industrial, Metal, Plastic, Aerospace, Leather, Military, Decorative, Construction, Light Marine



# TEKNA Gravity Feed

Ref. No.	Description	Part No.	Qty
1	Air Cap Retaining Ring		1
2	Slip Ring		1
3	Air Cap		1
4	Air Cap Retaining Clip	JGA-156-K10	1
5	Retaining Ring Seal		1
6	Air Cap & Ring	See Air Cap Selection Guide	1
7	Air Cap Retaining Ring & Seals	702725	1
8	Fluid Nozzle	See chart 1	1
9	Spray Head		1
*10	Spray Head Seal	702726	1
11	Spray Head Kit	SN-69-K	1
*12	Circlip		1
13	Valve Body		1
*14	O Ring		1
*15	Spreader Valve Pin		1
16	Spreader Valve Adjusting Knob		1
17	Spreader Valve Assembly	702730	1
18	Front Valve Seal		1
19	Valve Seat		1
20	Spindle		1
21	Air Valve Spring		1
22	Rear Valve Seal		1
23	Air Valve Kit	703530	1
24	Fluid Needle	PRO-301-K	1
25	Needle Spring		1
26	Spring Pad		1
27	Housing & Seal Kit	SN-66-K	1
28	Fluid Adjusting Knob	SN-67-BL-K	1
*29	Needle Spring Kit	PRO-472-K3	1
30	Gun Body		1
31	Air Inlet		1
32	Color ID Ring Kit (4 Colors)	702735	1
33	Air Inlet Kit	702734	1



Ref. No.	Description	Part No.	Qty
34	Needle Packing		1
35	Packing Spring		1
36	Packing Nut		1
*37	Packing, Spring and Packing Nut Kit	702731	1
*38	Trigger Screw		1
39	Trigger		1
*40	Trigger Stud		1
41	Trigger Stud & Screw Kit	SP-617-CR-K	1
42	Plug		1
43	Cheater Valve (optional)	702737	1
44	Air Valve Service Tool (only included in the Air Valve Kit 23)		1

**SERVICE parts**  
 Spray Gun Repair Kit (includes items marked\*) PRO-470  
 Seal and Pin Kit, Kit of 5 (items 12, 14 and 15) GTI-428-K5

## TEKNA Gravity Feed Model Numbers

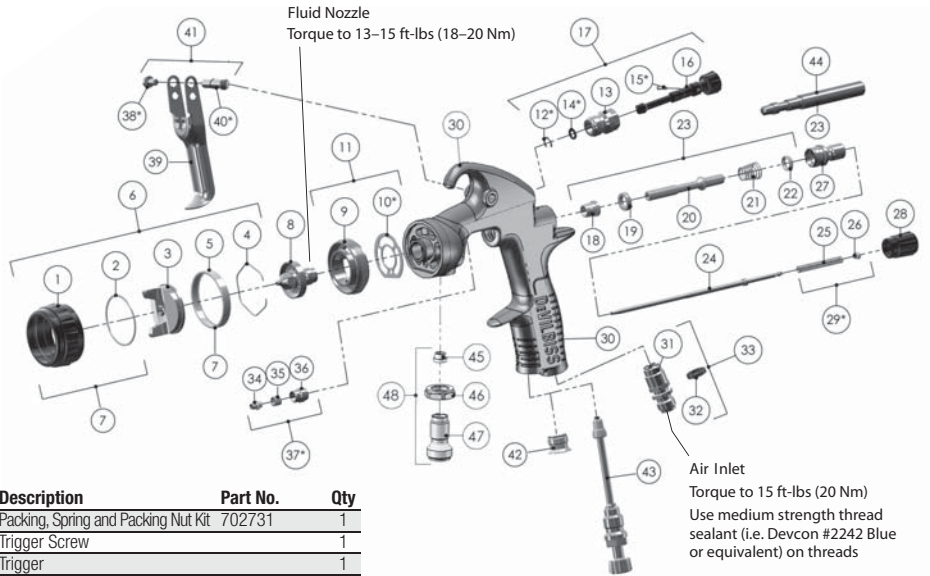
Model No.	Fluid Nozzles (mm)	Cup	Air Caps	Analog Gauge
303938	1.3, 1.4, 1.5	Yes	TE20, HV30	HAV-512
303937	1.2, 1.3, 1.4	Yes	TE10, TE20	HAV-512

## CHART 1

Size (mm)	Fluid Nozzle
1.2	PRO-200-12-K
1.3	PRO-200-13-K
1.4	PRO-200-14-K
1.5	PRO-200-15-K

# TEKNA Pressure Feed

Ref. No.	Description	Part No.	Qty
1	Air Cap Retaining Ring		1
2	Slip Ring		1
3	Air Cap		1
4	Air Cap Retaining Clip	JGA-156-K10	1
5	Retaining Ring Seal		1
6	Air Cap & Ring	See Air Cap Selection Guide	1
7	Air Cap Retaining Ring & Seals	702725	1
8	Fluid Nozzle	See Chart 2	1
9	Spray Head		1
*10	Spray Head Seal	702726	1
11	Spray Head Kit	SN-69-K	1
*12	Circlip		1
13	Valve Body		1
*14	O Ring		1
*15	Spreader Valve Pin		1
16	Spreader Valve Adjusting Knob		1
17	Spreader Valve Assembly	PRO-408-BL-K	1
18	Front Valve Seal		1
19	Valve Seat		1
20	Spindle		1
21	Air Valve Spring		1
22	Rear Valve Seal		1
23	Air Valve Kit 703530		1
24	Fluid Needle	See Chart 2	1
25	Needle Spring		1
26	Spring Pad		1
27	Housing & Seal Kit	SN-66-K	1
28	Fluid Adjusting Knob	SN-67-BL-K	1
*29	Needle Spring Kit	PRO-472-K3	1
30	Gun Body		1
31	Air Inlet		1
32	Color ID Ring Kit (4 Colors)	702735	1
33	Air Inlet Kit	702734	1
34	Needle Packing		1
35	Packing Spring		1
36	Packing Nut		1



Ref. No.	Description	Part No.	Qty
*37	Packing, Spring and Packing Nut Kit	702731	1
*38	Trigger Screw		1
39	Trigger		1
*40	Trigger Stud		1
41	Trigger Stud & Screw Kit	SP-617-CR-K	1
42	Plug		1
43	Cheater Valve (optional)	702737	1
44	Air Valve Service Tool (only included in the Air Valve Kit 23)		1
45	Seal		1
46	Lock Nut		1
47	Fluid Inlet		1
48	Fluid Inlet Kit	ADV-7-K	1

**SERVICE parts**  
 Spray Gun Repair Kit (includes items marked \*) PRO-470  
 Seal and Pin Kit, Kit of 5 (items 12, 14 and 15) GTI-428-K5

## TEKNA Pressure Feed Model Number

Model No.	Fluid Nozzles (mm)	Cup Type	Air Caps	Analog Gauge
303939	1.0, 1.2, 1.4	None	TE40, HV40	HAV-512

## CHART 2

Size (mm)	Fluid Nozzle	Fluid Needle
1.0	PRO-205-10-K	PRO-320-085-10-K
1.2	PRO-205-12-K	PRO-320-12-14-K
1.4	PRO-205-14-K	PRO-320-12-14-K



# AlITEKNA Models Feature

## QUICKCLEAN™

### Fastest Cleaning Spray Gun

### Coating has non-stick properties



#### Fully Coated Inside

- High corrosion resistance reduces paint defects
- All passages protected
- A must for waterborne



TEKNA® QuickClean™

Competitor

#### Fully Coated Outside

- Extremely durable
- Looks newer longer
- Scratch resistant



TEKNA® QuickClean™

Competitor

### Sales and Service through our Global Network of Distributors

Finishing Brands Offices

Americas: USA ▪ Mexico ▪ Brazil

Europe/Asia/Africa: United Kingdom ▪ France ▪ Germany ▪ India

Pacific Rim: China ▪ Japan ▪ Australia

**DEVILBISS**  
www.devilbiss.com  
1-800-992-4657



**CARLISLE**  
FLUID TECHNOLOGIES