

S2BX83H9



Symmetrical steel screw cover cap, it can be personalised on request.
 For all 100, 200 and 700 Series hinges.

Cubretornillo simétrico de acero. Puede ser personalizado (logo) a solicitud. Para todas las bisagras Series 100, 200 y 700.

S2MX83H9



Symmetrical steel screw cover cap, with embossed logo.
 For all 100, 200 and 700 Series hinges.

Cubretornillo simétrico de acero con logo acuñado. Para todas las bisagras Series 100, 200 y 700.

S2XX85H9



Steel flange cover cap, it can be personalised on request.

Cubrecazoleta de acero. Puede ser personalizada (logo) a solicitud.

S2KX85A9



Steel flange cover cap with embossed logo.
 For the K Hinges.

Cubrecazoleta de acero con logo acuñado. Para bisagras K.

S2AF37X3



Stop device.
 For 165° hinges, it limits opening at 120°.
 For 155° hinges, it limits opening at 140°.

Tope de abertura. Para bisagras 165°, limita la abertura a 120°. Para bisagras 155°, limita la abertura a 140°.



S2BF37XY

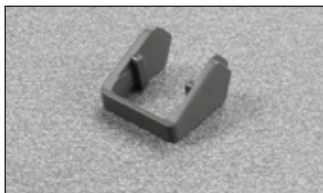


Stop device.
 For 165° hinges, it limits opening at 110°.
 For 155° hinges, it limits opening at 130°.

Tope de abertura. Para bisagras 165°, limita la abertura a 110°. Para bisagras 155°, limita la abertura a 130°.



S2AM37XG

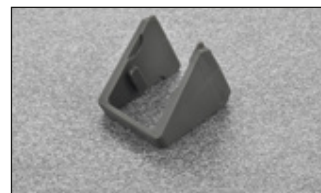


Stop device.
 For 155° hinges (C2_K), it limits opening at 120°.

Tope de abertura. Para bisagras 155° (C2_K), limita la abertura a 120°.



S2BM37XG



Stop device.
 For 155° hinges (C2_K), it limits opening at 92°.

Tope de abertura. Para bisagras 155° (C2_K), limita la abertura a 92°.



S2XF86



Spacer for hinges with 155° and 165° opening.

To be used to reduce cup drilling depths.

Not to be used with Logica hinges.

*Espesor para bisagras con abertura 155° y 165°.
Utilizar para reducir las profundidades de taladro de la cazoleta.*

No utilizar con la bisagras Logica.

S2XF86BT = 0.6 mm

S2XF86AT = 1.2 mm

S2XF86KT = 1.8 mm

S2XX86



Spacer for hinges with 94°, 105° and 110° opening.

To be used to reduce cup drilling depths.

Not to be used with Logica hinges.

*Espesor para bisagras con abertura 94, 105° y 110°.
Utilizar para reducir las profundidades de taladro de la cazoleta.*

No utilizar con la bisagras Logica.

S2XX86BT = 0.6 mm

S2XX86AT = 1.2 mm

S2XX86KT = 1.8 mm

D_A6AC_SN



Gauge to check the diameter and the depth of the drilling.

Calibre para verificar el diámetro y la profundidad del taladro.

For 100 series hinges

Para bisagras serie 100

D1A6AC3SN = 12 mm

For 200 series hinges

Para bisagras serie 200

D2ABACGSN = 15.5 mm

For 700 series hinges

Para bisagras serie 700

D7A6ACYSN = 13.5 mm

S2A637XF



Stop device for all hinges with 94° opening and 35 mm cup only. It limits the opening to 86°.

500 pcs/box.

Tope de apertura para todas las bisagras con abertura de 94° con cazoleta \varnothing 35 mm, limita la apertura a 86°.

500 pz/cada caja.

DPMSNB



Release device.
ø 10 mm, 40 mm length.

Pulsador.
ø 10 mm, anchura 40 mm.

Packing - 250

Embalajes - 250

DPASNB



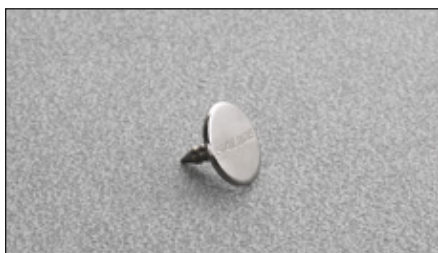
Release device to be used to increase the magnetic holding strength. It must always be used together with the DPM. The suggested position of the DPM is the point of pressure on the door. The DPA can be positioned at any point along the opening edge of the door. ø 10 mm, 40 mm length.

Pulsador magnético de utilizar para aumentar la fuerza de retención. Tiene que ser siempre utilizado en combinación con el DPM. La posición aconsejada del DPM es en correspondencia del punto de presión sobre la puerta; aquella del DPA es indiferente. ø 10 mm, anchura 40 mm.

Packing - 250

Embalajes - 250

DP28SN9



Retaining catch to be inserted.
ø 11.5 mm.

Contrapulsador de insertar ø 11,5 mm.

Packing - 250

Embalajes - 250

DP38XX91



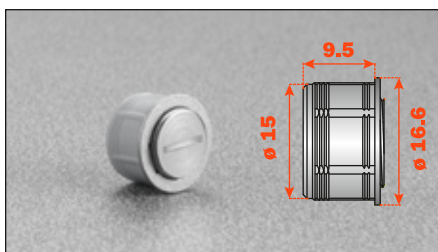
Retaining catch with adhesive.
20x14 mm.

Contrapulsador con adhesivo 20x14 mm

Packing - 250

Embalajes - 250

DP39XXG



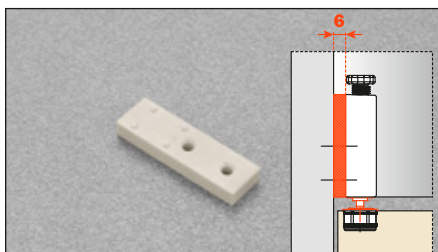
Adjustable magnetic retaining catch.
ø16.6 mm

Contrapulsador magnético regulable ø16.6 mm

Packing - 250

Embalajes - 250

SP44XX



Spacer for inset door to be used together with DP82XX_R.

Separador para puertas internas en combinación con DP82XX_R

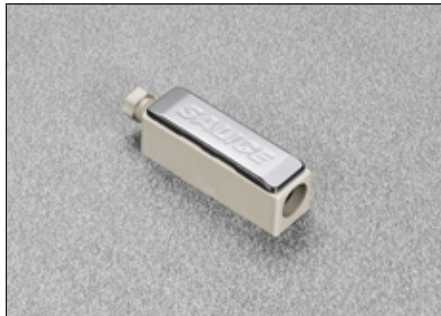
SP44XXB = Beige
SP44XX3 = Black

SP44XXB = Beige
SP44XX3 = Negro

Packing - 250

Embalajes - 250

DP82XXBR



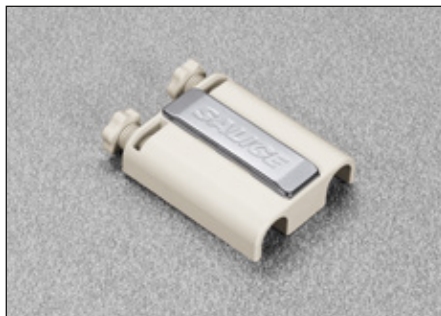
Adjustable longitudinal plastic adapter for release device. To be fixed with woodscrews. 8+16 mm drilling.
 Screw cover to be ordered separately.
 DP82xxBR = beige DP82xxQR = brown*
 DP82xxGR = gray* DP82xx3R = black
*** The cover cap shown in the picture has to be ordered separately.**

*Adaptador longitudinal regulable de plástico para pulsador. Fijación por tornillos para madera. Taladro 8+16 mm.
 Cubretornillo a pedir separadamente.
 DP83xxBR = beige DP83xxQR = marrón*
 DP83xxGR = gris* DP83xx3R = negro
*** Solo pedido especial.***

Packing - 500

Embalajes - 500

DP83XXBR



Adjustable double plastic adapter for release device. To be fixed with woodscrews. 8+32 mm drilling.
 Screw cover to be ordered separately.
 DP83xxBR = beige DP83xxQR = brown*
 DP83xxGR = gray* DP83xx3R = black
*** The cover cap shown in the picture has to be ordered separately.**

*Adaptador doble regulable de plástico para pulsador. Fijación por tornillos para madera. Taladro 8+32 mm.
 Cubretornillo a pedir separadamente.
 DP83xxBR = beige DP83xxQR = marrón*
 DP83xxGR = gris* DP83xx3R = negro
*** Solo pedido especial.***

Packing - 500

Embalajes - 500

DP84SNBR



Adjustable plastic adapter for release device. To be fixed with woodscrews. 8x32 mm drilling.
 DP84xxBR = beige DP84xxQR = brown*
 DP84xxGR = gray* DP84xx3R = black

*Adaptador regulable de plástico para pulsador. Fijación por tornillos para madera. Taladro 8x32 mm.
 DP84xxBR = beige DP84xxQR = marrón*
 DP84xxGR = gris* DP84xx3R = negro*

Packing - 500

Embalajes - 500