

Panther 100G

100 Series Teflon Coated Conventional

The Panther 100G is a high quality general purpose sprayer designed for spraying adhesives. Complete with an all stainless steel fluid passage, this spray gun is perfect for all coatings from thin to thick.

Panther 100G

Features

- ➔ Forged Aluminum Body
- ➔ Stainless Steel Fluid Passages
- ➔ Heavy Duty Needle Spring
- ➔ Teflon Hard Coat Gun Body
- ➔ Teflon Hard Coat Air Cap



1 Quart
 Pressure Cup
 (Aluminum)

OP100G-18-2266-3T-350R

Panther 100G

"Teflon Coated Durability"

Available Outfits

2 Quart Outfits

(Includes 5' Hose Assemblies)



2 Quart
 (Economy)

OP100G-130



2 Quart
 (Bandit)

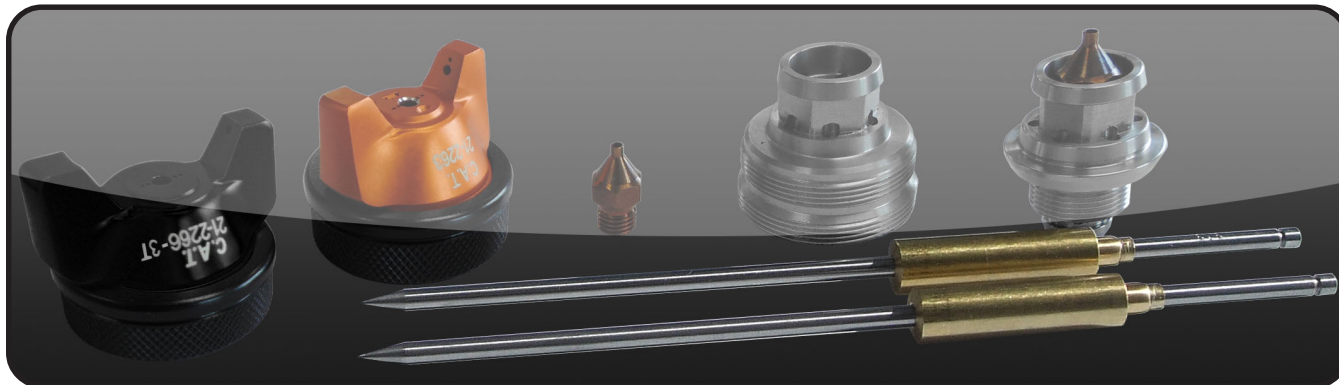
OP100G-600

Tank Outfits

Tank Outfits Include 25' Hose Assemblies and are available in 2.5 gal, 5 gal, 10 gal, 12.5 gal and 15 gal sizes.

(Includes 25' Hose Assemblies)





Nozzle Chart for *Panther100G*

Material Type	Fluid Orifice x Air Cap	Maximum Pattern Width	Pressure / Siphon
Very Thin less than 16 sec. Zahn #2 inks, dyes, solvents, stains	0.6, 0.7 mm x 2163	8	P
	0.6, 0.7 mm x 2166	9	S
	0.6, 0.7 mm x 2266T	12	S
Thin 16 to 20 sec. Zahn #2 lacqers, enamels, primers, sealers	0.6, 0.7, 1.0 mm x 2163	8	P
	0.6, 0.7, 1.0 mm x 2366	14	S
	0.6, 0.7, 1.0 mm x 2466	13	S
Medium 21 to 30 sec. Zahn #2 automotive base coat enamels, primers, epoxies, urethanes, automotive clear coat	1.2, 1.3, 1.5, 1.8 mm x 2263	14	P
	1.2, 1.3, 1.5, 1.8 mm x 2266T	10	S
	1.2, 1.3, 1.5, 1.8 mm x 2266-3T	15	P/S
	1.2, 1.3, 1.5, 1.8 mm x 2466	13	S
Heavy over 30 sec. Zahn #2 heavy body primers, high solid enamels, high solid automotive coatings, adhesives	1.5, 1.8 mm x 2466	13	S
	2.2 mm x 2167	12	P
	2.2 mm x 2267	15	P
	2.8 mm x 2168	12	P

Common Air Caps for *Panther100G*

Air Caps	Pressure / Siphon	Max Inlet Pressure	CFM @ Max Inlet Pressure
21-2266T	Siphon	50 PSI	12 CFM @ 50 PSI
21-2266-3T	Pressure	50 PSI	16.2 CFM @ 50 PSI
21-2263	Pressure	50 PSI	14 CFM @ 50 PSI
21-2166	Siphon	50 PSI	5 CFM @ 50 PSI
21-2366	Siphon	50 PSI	12 CFM @ 50 PSI
21-2466	Siphon	50 PSI	15 CFM @ 50 PSI
21-2167	Pressure	50 PSI	14.5 CFM @ 50 PSI
21-2267	Pressure	50 PSI	15 CFM @ 50 PSI
21-2168	Pressure	50 PSI	14 CFM @ 50 PSI

PMP 150 pump



The PMP-150 diaphragm pump is designed for applications requiring a 1: 1 pressure ratio and can be used on some adhesive applications and harsh or high viscosity coatings.

FEATURES

- Simple design
- Double material diaphragm out of PTFE and nitrile
- Compact design

BENEFITS

- Easy operation and maintenance
- Compatible with most of solvent or water-based products. Quick motor inversion
- Easy to carry

SPECIFICATIONS

Pressure ratio	1/1
Fluid volume per cycle (cm ³)	100
Number of cycles per litre of products	10
Air consumption (m ³ /h) at 30 cycles/mn at 4 bar	1.1
Fluid Output at 30 cycles/mn (l/mn)	3
Free flow rate (L/mn)	19
Maximum air inlet pressure (bar)	6
Maximum fluid pressure (bar)	6
Maximum Fluid Temperature (°C)	50
Sound level (dBA)	<70
Weight (kg) - bare pump	5
Wetted parts	PTFE, Polypropylene, Stainless steel
Height (cm) - wall-mounted	24
Width (cm) - wall-mounted pump	36
Depth (cm) - wall-mounted pump	26

FITTINGS

Fitting	Air inlet (valve)	F 3/8" BSP
	Air outlet (atomization air)	M 1/4" NPS
	Fluid Inlet	M 18 x 125
	Fluid Outlet	M 3/8" NPS

CONFIGURATION OF THE PMP 150 PUMP

Set-up	Air motor power regulator	Atomization air regulator	Air regulator Fluid pressure	Suction rod	Drain rod	Pump output filter	Part number
Bare pump	-	-	-	-	-	-	144.931.000
Wall mounted	●	●	●	-	-	-	151.759.900
Wall mounted	●	●	●	●	-	-	151.753.000
Wall mounted	●	●	●	●	-	●	151.759.100
Cart mounted	●	●	●	●	-	-	151.754.000
Wall-mounted with stainless steel circulation	-	●	●	●	-	-	151.757.000

PMP 150 pump

OPTIONS

Description	Can be fitted on	Part number
Stainless steel circulation kit (to be included: wall bracket ref: 056.100.199)	Wall-mounted and mobile pumps	151.757.010
Motor air supply kit	Bare pump	151.753.050

SEAL KITS

Description	Part number
PMP motor seal kit	144.931.091
Fluid section seal kit (PTFE)	144.931.092
Fluid section seal kit (EPDM)	144.931.095
Fluid section seal kit (FPM)	144.931.096

FITTING FOR ELECTROSTATIC INSTALLATION

Description	Part number
Adaptator F 38°NPS/M 1/2" JIC	050.123.306

CARTS, CUPS AND SUCTION RODS

Description	Part number
2 liters gravity cup kit with bracket	151.758.100
Tripod for PMP 150	051.755.010
2 liters gravity cup kit without bracket	151.662.355
Single Post Cart	051.730.110
Complete wall mounting bracket	051.751.030
Suction rod 18 x 125 fitting - plunger tube length 600mm	049.596.010



KITS FOR PMP 150 PUMPS

Kit designation	Gun type	Hoses Length (m)	Kit part number
PMP 150 standard wall-mounted	M2215 EN 3	7.5	151.249.040
PMP 150 standard wall-mounted with stainless steel circulation	M2215 EN 3	7.5	151.249.050
PMP 150 standard wall mounted	M2209 E 3 K HVLP	7.5	151.249.080
PMP 150 standard wall-mounted with stainless steel circulation	M2209 E 3 K HVLP	7.5	151.249.090