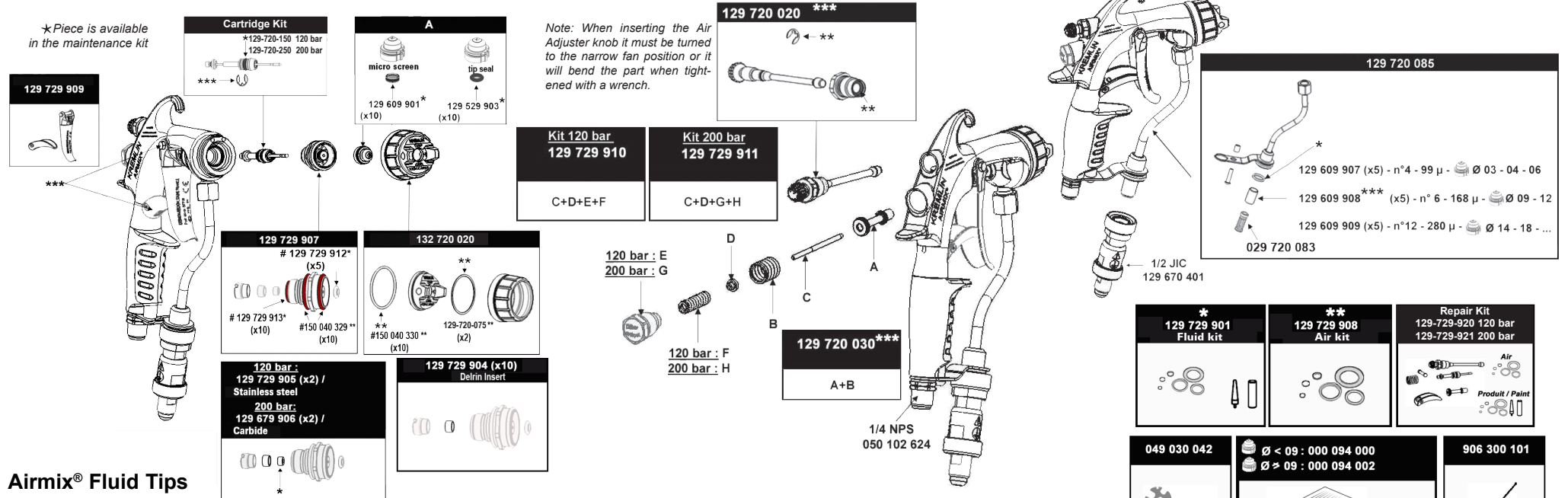




PREVENTATIVE MAINTENANCE SCHEDULE- XCITE™ AIRMIX®



Airmix® Fluid Tips

Tip Number	Fluid Output				Diameter in Inches	Diameter in mm	Gun Filter	Pump Filter	Spray Angle and Max fan width at gun target distance of 10" from Substrate																
	500 psi 35 bar		1000 psi 70 bar						Mesh	Filter #	Mesh	Filter #	10°	18°	30°	40°	45°	50°	60°	67°	75°	82°	90°		
	oz/min	cm³/min	oz/min	cm³/min									9 cm	13 cm	18 cm	23 cm	24 cm	25 cm	31 cm	33 cm	38 cm	46 cm	60 cm		
02	1.2	40	3.4	100	0.005	0.127	140 (4)	200 (2)	02-03	02-05															
03	3.4	100	5.1	150	0.007	0.178	140 (4)	140 (4)	03-03	03-05	03-07														
04	5.1	150	6.8	200	0.009	0.229	85 (6)	85 (6)	04-03	04-05	04-07	04-09	04-10	04-11	04-13										
06	6.8	200	11.2	330	0.011	0.279	85 (6)	85 (6)	06-03	06-05	06-07	06-09	06-10	06-11	06-13	06-15									
09	10.1	300	15.2	450	0.013	0.330	85 (6)	85 (6)	09-03	09-05	09-07	09-09	09-10	09-11	09-13	09-15									
12	11.2	350	20.3	600	0.015	0.381	70 (8)	70 (8)	12-05	12-07	12-09	12-10	12-11	12-13	12-15	12-17									
14	13.5	400	24.4	720	0.016	0.406	70 (8)	70 (8)	14-03	14-05	14-07	14-09	14-10	14-11	14-13	14-15	14-17								
18	15.2	450	28.7	850	0.018	0.457	60 (12)	60 (12)	18-05	18-07	18-09	18-10	18-11	18-13	18-15	18-17									
20	16.9	500	35.8	1,060	0.020	0.508	60 (12)	60 (12)			20-07	20-09	20-10	20-11	20-13	20-15	20-17	20-19							
25	22.0	650	45.0	1,330	0.022	0.559	60 (12)	60 (12)			25-07	25-09	25-10	25-11	25-13	25-15	25-17								
30	25.4	750	54.1	1,600	0.024	0.610	60 (12)	60 (12)			30-07	30-09	30-10	30-11	30-13	30-15	30-17	30-19							
40	33.3	985	66.6	1,970	0.027	0.686	60 (12)	60 (12)				40-09	40-10	40-11	40-13	40-15	40-17	40-19	40-21						
45	38.9	1150	77.8	2,300	0.029	0.737	60 (12)	60 (12)					45-10	45-11	45-13	45-15	45-17	45-19	45-21						
60	43.3	1281	86.6	2,561	0.031	0.787	60 (12)	60 (12)					60-10	60-11	60-13	60-15	60-17	60-19	60-21						

Standard tips
 - To order a tip, replace the crosses in 134-50x-xx4 with the corresponding number from the chart above. (Example: 134-506-094 for a 06-09 tip) When ordering a 100 tip, use 134-xxx-xx4 (Example: 134-100-134).

Xtra™ tips
 - To order a tip, replace the crosses in 134-50x-xx2 with the corresponding number from the chart above. (Example: 134-506-092 for a 06-09 tip) Ideally used for waterborne materials.

Special Order tips - These tips require a minimum of 25 tips per order and these tips cannot be ordered in the Xtra™ tip style.

Optimum Fan Adjustment
 - These tips allow for fan adjustment when used with a VX24 air cap.

SAMES KREMLIN Inc.
 North America Headquarters
 45001 5 Mile Road, Plymouth, Michigan 48170 | Toll: (800)573-5554 | Tel: (734)979-0100 | Fax: (734)927-0064

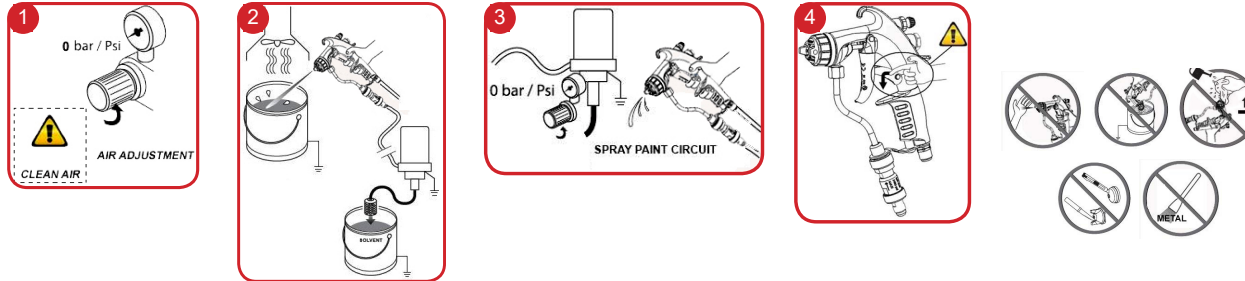
Canada Branch
 931 Progress Avenue, Unit 7, Scarborough, Ontario M1G 3V5 | Toll: (800)450-0655 | Tel: (416)431-5017 | Fax: (416)431-9171

Mexico Branch
 Acceso III N°16A Int 15A, Parque Industrial Benito Juárez, Querétaro, CP 76120 | Tel: +52 (442)161-2595 ext 170 oficina

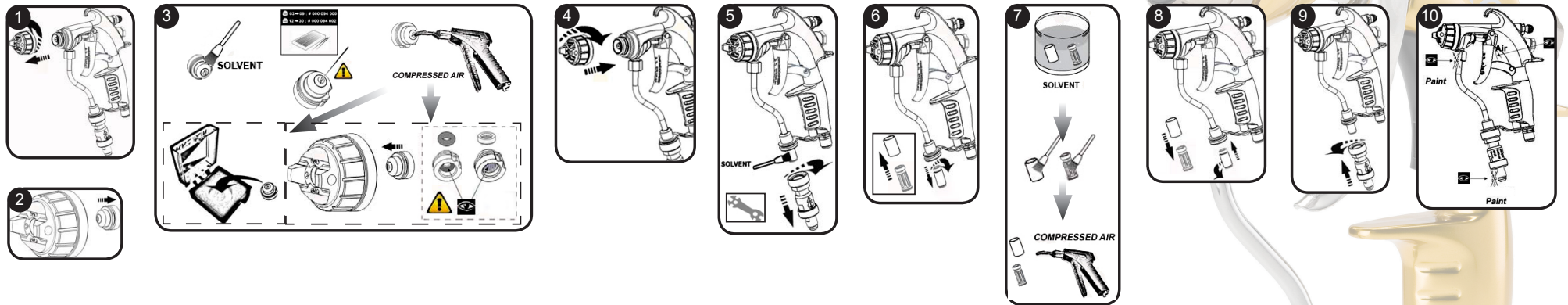
PREVENTATIVE MAINTENANCE SCHEDULE- XCITE™ AIRMIX®



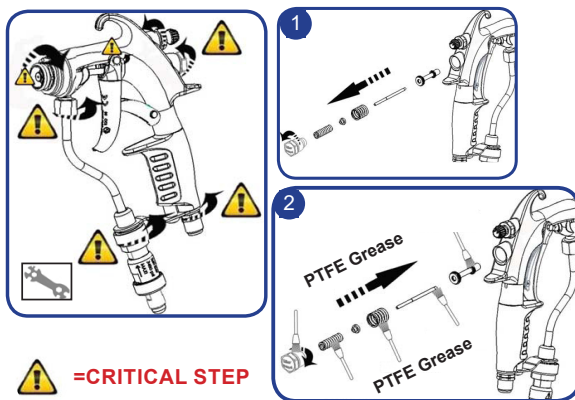
DO THIS BEFORE ANY MAINTENANCE ACTION:



DAILY MAINTENANCE:

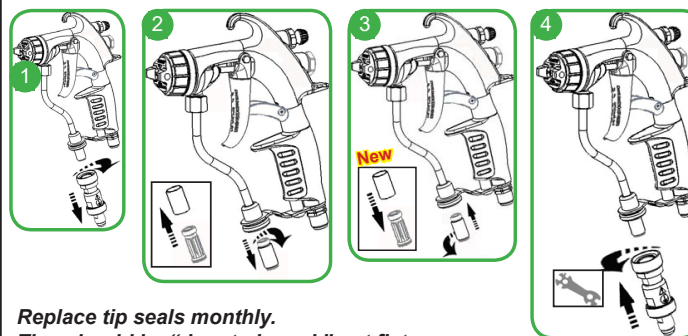


WEEKLY MAINTENANCE:



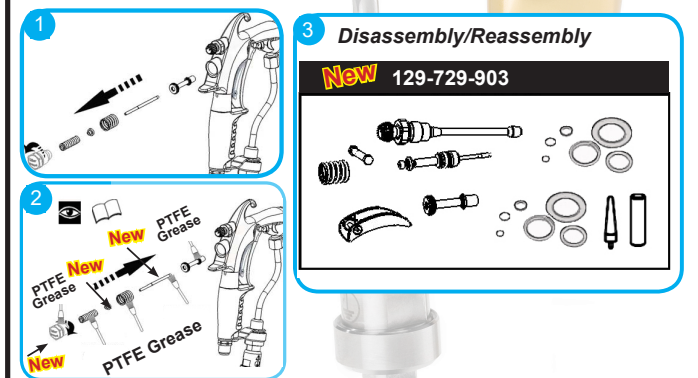
Clean the air passages on the nozzle and inspect the nozzle o-ring weekly.

QUARTERLY MAINTENANCE:



Replace tip seals monthly.
Tips should be "donut-shaped," not flat.

YEARLY MAINTENANCE:



TECHNICAL DATA TABLE

Designation	Value
Maximum Fluid Pressure	120 - 200 - 400 (1740 -
Maximum Air Pressure	6 (87)
Recommended Air Pressure (min)	0.7 - 3 (11.6 - 43)
Transfer Efficiency	86
Maximum Fluid Temperature	50 (122)
Air Inlet	M 1/4 NPS
Trigger Lock Safety	X
Polished Forged Aluminum Body	X
Stainless Steel, PTFE, Carbide Wetted Parts	X
Weight	579 (20)
Fluid Swivel Fitting (available upon version)	x

DISTRIBUTED BY:
Pro Wood Finishes
14622 Southlawn Lane
Rockville MD 20850
Ph: (301) 424-3033