

# TOMCAT

## 100 Series Conventional General Purpose

The Tomcat is a price competitive and high quality production sprayer. It is designed for the painter who wants a conventional gun for spraying a wide range of coatings from glue to fine finish... The Tomcat can handle it all.

### TOMCAT Features

- ➔ Economically priced
- ➔ General purpose spray gun with a wide range of fluid nozzles and air caps
- ➔ Standard pressure setup (1.2 x 2263)
- ➔ Standard siphon setup (1.8 x 2266)



1 Quart  
 Pressure Cup  
 (Aluminum)  
**OT100C-303R2**



1 Quart  
 Siphon Cup  
 (Aluminum)  
**OT100C-301**

**Quality**  
**Simplicity**  
**Reliability**

### Available Outfits

#### 2 Quart Outfits

(Includes 5' Hose Assemblies)



2 Quart  
 (Economy)  
**OT100C-130**



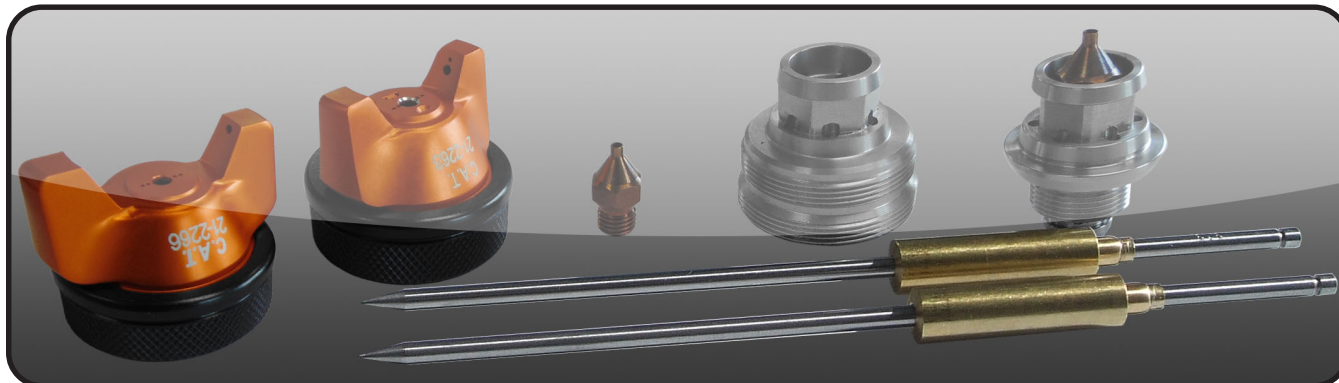
2 Quart  
 (Bandit)  
**OT100C-600**

#### Tank Outfits

Tank Outfits Include 25' Hose Assemblies and are available in 2.5 gal, 5 gal, 10 gal, 12.5 gal and 15 gal sizes.

(Includes 25' Hose Assemblies)





### Nozzle Chart for **TOMCAT**

Material Type	Fluid Orifice x Air Cap	Maximum Pattern Width	Pressure / Siphon
<b>Very Thin</b> less than 16 sec. Zahn #2 inks, dyes, solvents, stains	0.6, 0.7 mm x 2163	8	P
	0.6, 0.7 mm x 2166	9	S
	0.6, 0.7 mm x 2266	12	S
<b>Thin</b> 16 to 20 sec. Zahn #2 lacqers, enamels, primers, sealers	0.6, 0.7, 1.0 mm x 2163	8	P
	0.6, 0.7, 1.0 mm x 2366	14	S
	0.6, 0.7, 1.0 mm x 2466	13	S
<b>Medium</b> 21 to 30 sec. Zahn #2 automotive base coat enamels, primers, epoxies, urethanes, automotive clear coat	1.2, 1.3, 1.5, 1.8 mm x 2263	14	P
	1.2, 1.3, 1.5, 1.8 mm x 2266	10	S
	1.2, 1.3, 1.5, 1.8 mm x 2266-3	15	S
	1.2, 1.3, 1.5, 1.8 mm x 2466	13	S
<b>Heavy</b> over 30 sec. Zahn #2 heavy body primers, high solid enamels, high solid automotive coatings, adhesives	1.5, 1.8 mm x 2466	13	S
	2.2 mm x 2167	12	P
	2.2 mm x 2267	15	P
	2.8 mm x 2168	12	P

### Common Air Caps for **TOMCAT**

Air Caps	Pressure / Siphon	Max Inlet Pressure	CFM @ Max Inlet Pressure
21-2263	Pressure	50 PSI	14 CFM @ 50 PSI
21-2166	Siphon	50 PSI	5 CFM @ 50 PSI
21-2266	Siphon	50 PSI	12 CFM @ 50 PSI
21-2266-3	Pressure	50 PSI	16.2 CFM @ 50 PSI
21-2366	Siphon	50 PSI	12 CFM @ 50 PSI
21-2466	Siphon	50 PSI	15 CFM @ 50 PSI
21-2167	Pressure	50 PSI	14.5 CFM @ 50 PSI
21-2267	Pressure	50 PSI	15 CFM @ 50 PSI
21-2168	Pressure	50 PSI	14 CFM @ 50 PSI

# Pressure Tanks

## Standard Pressure Tanks (2.5 Gallon - 15 Gallon)



**51-202**



**51-204**



**51-214**



**51-504**



**51-502**



**51-554**



**51-702**

2.5 Gallon Pressure Tanks				
Tanks	Part #	Regulators	Agitator	Description
Standard	51-200	0	None	The 2.5 gallon non-ASME tank from C.A.T. is constructed of heavy gage steel. The tank has wheels for maneuverability or optional stationary feet. All 2.5 gallon tanks come with a ridged liner.
	51-201	1	None	
	51-202	2	None	
	51-203	1	Air	
	51-204	2	Air	
	51-205	0	Air	
	51-207	2	None	
Bottom Outlet	51-209	2	Air	The bottom outlet 2.5 gallon non-ASME tank from C.A.T. is constructed of heavy gage steel. The tanks have a baked on coating and come with or without agitation. The tank has wheels for maneuverability or optional stationary feet. All bottom outlet tanks have a 3/4" fluid outlet w/ ball valve.
	51-210	0	None	
	51-211	1	None	
	51-212	2	None	
	51-213	1	Air	
	51-214	2	Air	
51-215	0	Air		

Tank Inside Dimensions: Diameter = 10 1/2"      Gasket: 51-220      Tank Liners: 51-261-12 (12 Pack - Rigid)  
 Depth = 8 3/4"      51-231-10 (10 Pack - Bag)

5 Gallon Pressure Tanks				
Tanks	Part #	Regulators	Agitator	Description
Standard	51-500	0	Hand	The 5 gallon non-ASME tank from C.A.T. is constructed of heavy gage steel. This tank comes standard with dual fluid outlets and ball valves. The tank has wheels for maneuverability or optional stationary feet. Maximum working pressure is 80 PSI. The tank comes with a 2" dia. fill port.
	51-501	1	Hand	
	51-502	2	Hand	
	51-503	1	Air	
	51-504	2	Air	
	51-505	0	Air	
	51-506	0	None	
	51-507	1	None	
	51-508	2	None	
	Bottom Outlet	51-510	0	
51-511		1	None	
51-512		2	None	
51-513		0	Air	
51-514		1	Air	
51-515	2	Air		

Tank Inside Dimensions: Diameter = 12 1/2"      Gasket: 51-520      Tank Liners: 51-543-10 (10 Pack)  
 Depth = 15 1/2"

10 Gallon Pressure Tanks				
Tanks	Part #	Regulators	Agitator	Description
Standard	51-550	0	None	The 10 gallon non-ASME tank from C.A.T. is constructed of heavy gage steel. This tank comes standard with dual fluid outlets and ball valves. The tank has wheels for maneuverability or optional stationary feet. Maximum working pressure is 80 PSI. The tank comes with a fill port.
	51-551	1	None	
	51-552	2	None	
	51-553	1	Air	
	51-554	2	Air	
	51-555	0	Air	
	51-556	0	Hand	
	51-557	1	Hand	
	51-558	2	Hand	
	Bottom Outlet	51-560	0	
51-561		1	None	
51-562		2	None	
51-563		0	Air	
51-564		1	Air	
51-565		2	Air	

Tank Inside Dimensions: Diameter = 12 1/2"      Gasket: 51-520      Tank Liners: 51-543-10 (10 Pack)  
 Depth = 21 1/2"

15 Gallon Pressure Tanks				
Tanks	Part #	Regulators	Agitator	Description
Standard	51-701	1	None	The 15 gallon non-ASME tank from C.A.T. is constructed of heavy gage steel. This tank comes standard with dual fluid outlets and ball valves. Maximum working pressure is 80 PSI.
	51-702	2	None	
	51-703	1	Air	
	51-704	2	Air	

Tank Inside Dimensions: Diameter = 14 1/2"      Gasket: 51-720  
 Depth = 21 1/2"

# SS Pressure Tanks

## Stainless Steel Pressure Tanks (2.5 Gallon - 12.5 Gallon)



**51-802**



**51-804**



**51-914**



**51-854**



**51-852**



**51-882**



**51-941**

- C.A. Technologies Stainless Steel Tanks are the ideal solution for virtually all waterborne and corrosive coatings.
- C.A.T. SS tanks are fabricated from heavy weight 304 stainless steel: tank lid, shell, pickup tube, fluid outlets and all wetted parts are stainless steel.

2.5 Gallon Stainless Steel Pressure Tanks				
Tanks	Part #	Regulators	Agitator	Description
Stainless Steel	51-800	0	None	The 2.5 gallon stainless steel tank from C.A.T. is constructed of all S.S. inside and out. The tank has wheels for maneuverability or optional stationary feet.
	51-801	1	None	
	51-802	2	None	
	51-803	1	Air	
	51-804	2	Air	
	51-805	0	Air	
Stainless Steel Bottom Outlet	51-910	0	None	The bottom outlet 2.5 gallon non-ASME tank from C.A.T. is constructed of stainless steel and are available with or without agitation. The tanks have wheels for maneuverability or optional stationary feet. All bottom outlet tanks have a 3/4" fluid outlet w/ ball valve.
	51-911	1	None	
	51-912	2	None	
	51-913	1	Air	
	51-914	2	Air	
	51-915	0	Air	

Tank Inside Dimensions: Diameter = 10 1/2" Depth = 8 3/4"

Gasket: 51-220 Tank Liners: 51-261-12 (12 Pack - Rigid) 51-231-10 (10 Pack - Bag)

5 Gallon Stainless Steel Pressure Tanks				
Tanks	Part #	Regulators	Agitator	Description
Stainless Steel	51-850	0	None	The 5 gallon stainless steel tank from C.A.T. is constructed of all S.S. inside and out. The tank has wheels for maneuverability or optional stationary feet.
	51-851	1	None	
	51-852	2	None	
	51-853	1	Air	
	51-854	2	Air	
	51-855	0	Air	
Stainless Steel Bottom Outlet	51-920	0	None	The bottom outlet 5 gallon non-ASME tank from C.A.T. is constructed of stainless steel and are available with or without agitation. The tanks have wheels for maneuverability or optional stationary feet. All bottom outlet tanks have a 3/4" fluid outlet w/ ball valve.
	51-921	1	None	
	51-922	2	None	
	51-923	1	Air	
	51-924	2	Air	
	51-925	0	Air	

Tank Inside Dimensions: Diameter = 12 1/2" Depth = 15 1/2"

Gasket: 51-520 Tank Liners: 51-543-10 (10 Pack)

12.5 Gallon Stainless Steel Pressure Tanks				
Tanks	Part #	Regulators	Agitator	Description
Stainless Steel	51-880	0	None	The 12.5 gallon stainless steel tank from C.A.T. is constructed of all S.S. inside and out. The tank has wheels for maneuverability or optional stationary feet.
	51-881	1	None	
	51-882	2	None	
	51-883	1	Air	
	51-884	2	Air	
	51-885	0	Air	
Stainless Steel Bottom Outlet	51-940	0	None	The bottom outlet 12.5 gallon non-ASME tank from C.A.T. is constructed of stainless steel and are available with or without agitation. The tanks have wheels for maneuverability or optional stationary feet. All bottom outlet tanks have a 3/4" fluid outlet w/ ball valve.
	51-941	1	None	
	51-942	2	None	
	51-943	1	Air	
	51-944	2	Air	
	51-945	0	Air	

Tank Inside Dimensions: Diameter = 14 1/2" Depth = 19"

Gasket: 51-890