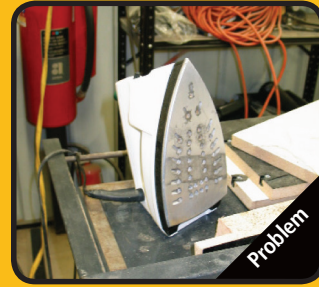


Fastedge™

Peel & Stick Edgebanding



-  **dbc**
Designed by a Cabinetmaker
-  **MADE IN THE USA**
Manufactured
-  **100% WATERPROOF**
-  **ULTRA ACRYLIC BOND**
-  **UNLIMITED LIFETIME GUARANTEE**



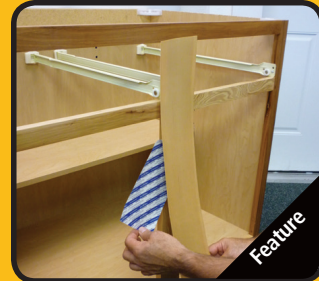
Iron-on edgebanding



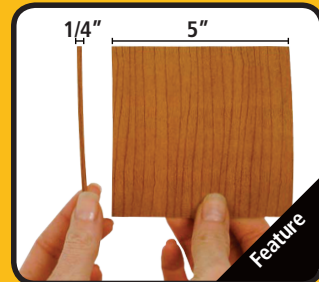
Peel & Stick Fastedge!



Amazing adhesion



Refacing



Custom widths available



We can match thousands of custom colors

Call to check for your color match

Custom colors (Min. 50' rolls)

Fastedge is a peel & stick edgebanding made with ultra-bond high performance PSA adhesive. It is fast, easy, super strong and increases in strength over time. Simply peel off the liner, stick, roll and trim and you are done!

Features...




- Fast and easy to install
- PVC, unfinished and pre-finished wood
- Increases in strength as it cures

Great for...

- Cabinetmakers
- Field repair
- Refacing

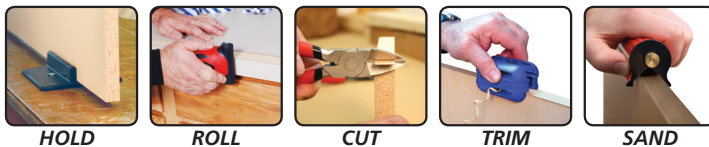
Patent Pending

Technical Information	
Standard Widths	15/16" and 3/4"
Custom Widths	From 1/4" to 5"
PVC Thickness	0.018" Thick
Wood Thickness	Up to 0.020" thick

Packaging for Fastedge		
50 foot roll	250 foot roll	600 foot roll (PVC only)
		

Fastedge Tool Kit

All the tools you need to apply edgebanding



- INCLUDES
- (2) FASTEDGE CLAMPS
 - (1) SPEEDROLLER
 - (1) FLUSH CUT TRIMMERS
 - (1) Q-TRIM
 - (1) FASTBREAK

Description	Part Number	USD
Fastedge Tool Kit	FE.TOOL KIT	