

DISTRIBUTED BY:
Pro Wood Finishes
14622 Southlawn Lane
Rockville MD 20850
Ph: (301) 424-3033



AIRMIX ® PUMP

10-14

Disassembly / Reassembly

ORIGINAL MANUAL

IMPORTANT : Read and understand all documents before storing, installing and start-up concerned equipment (professional use only).

PICTURES AND DRAWINGS ARE NOT CONTRACTUAL. THE MATERIAL MAY BE CHANGED WITHOUT PRIOR NOTICE

KREMLIN - REXSON

150, avenue de Stalingrad
93 245 - STAINS CEDEX – France

☎ : 33 (0)1 49 40 25 25 Fax : 33 (0)1 48 26 07 16

www.kremlin-rexson.com



WARNING :

Before any action on the pump, shut off the compressed air supply and depressurize the system by triggering the spray gun.

▪ THE FLUID SECTION OR AIR MOTOR REPLACEMENT

The pump is manufactured under the ATEX agreement and can not be modified. KREMLIN REXSON will not be held responsible for any failure to comply with that instruction.

Guards (motor cover, coupling shields, connectors,...) have been designed for a safe use of the equipment.

The manufacturer will not be held responsible for bodily injury or failure and / or property damage due to destruction, the overshadowing or the partial or total removal of the guards.

Position the air motor piston in a high position before shutting off the compressed air and before depressurizing the system.

Disassemble the pump from its bracket and put aside the pump.

Unscrew the screw located on the protection housing with an Allen wrench of 5. Slide the transparent part of the protection housing to access to the parts of the coupling.



Extract the pin and the coupling axis. Disassemble the air motor from the fluid section.

When changing the air motor :

Put aside the pump air equipment. Assemble it on the new air motor.

Place the protection housing on the material flange of the fluid section, assemble the air motor and the fluid section with the coupling axis and the pin, the rods and the nuts.

Slide the transparent part of the protection housing to close it. Align the hole located on the transparent part of the protection housing and the screw of the protection housing. Screw the screw with an Allen wrench of 5 to fix the protection housing.

Position the whole on the wall mounted unit.

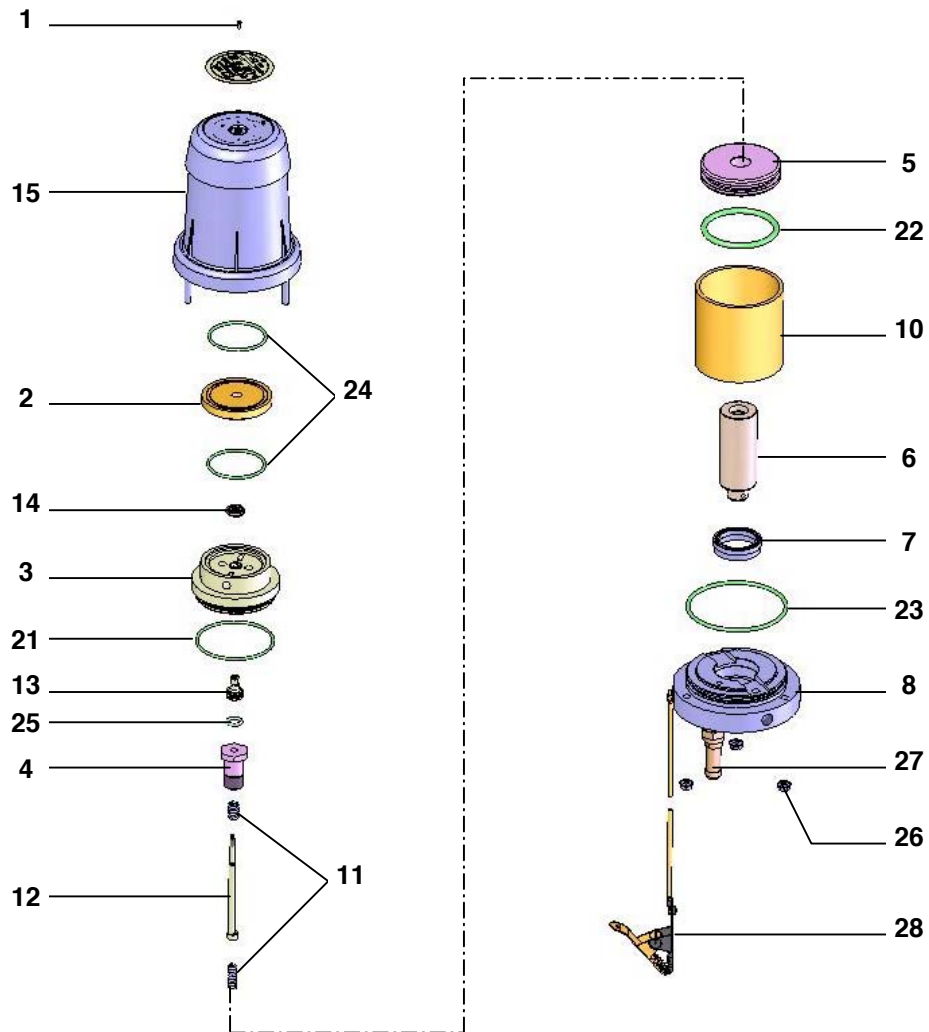
When changing the fluid section :

Place the protection housing on the material flange of the new fluid section, assemble the air motor and the fluid section with the coupling axis and the pin, the rods and the nuts.

Slide the transparent part of the protection housing to close it. Align the hole located on the transparent part of the protection housing and the screw of the protection housing. Screw the screw with an Allen wrench of 5 to fix the protection housing.

Position the whole on the wall mounted unit.

▪ MOTOR



Disassemble the cover (15) by removing the 3 M6 screws (26).

Unscrew the air motor valve (14) by holding on the control rod (12).

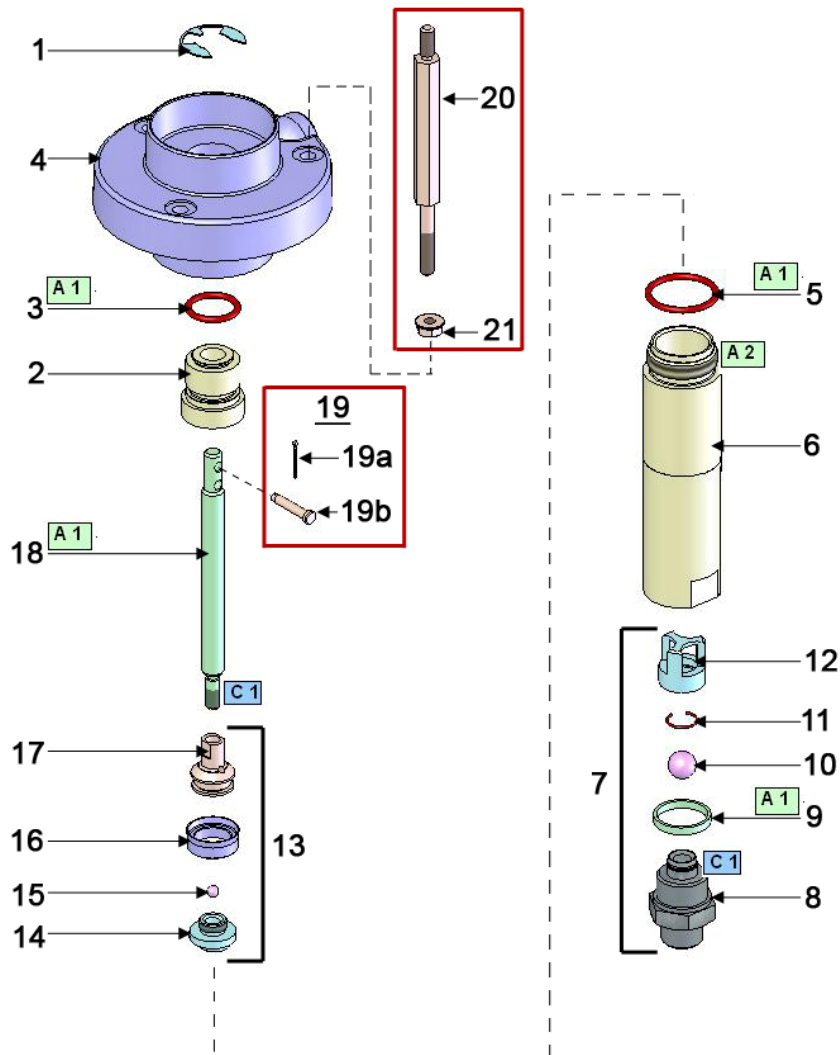
Reinstall the new air motor valve (14) and block it on the control rod (12) via the two flat parts located at its end.

Reinstall the cover (15) with its 3 nuts (26) :  **maximum screwing torque : 4mN / 2.95 ft/lbs**

Before reassembling the different components :

- Clean the parts with the appropriate cleaning solvent.
- Install new seals if it is necessary after having lubricated them with PTFE grease.
- Install new seals if it is necessary.

▪ **FLUID SECTION**



Index	Instruction	Description	Part number
A1	PTFE grease	'TECHNILUB' grease (10 ml)	560.440.101
A2	Graphite grease	Graphite grease box (1 kg / 2.204 lb)	560.420.005
C1	Medium strength Aneorobic Pipe sealant	Loctite 577	

➤ **SUCTION VALVE**

Unscrew the ball seat (8), the valve comes out the cylinder.

The ball cage (12) holds on the seat (8) by means of the circular rush (11).

Reinstall the ball seat (8) and check if the seal (9) is worn or damaged.

➤ **EXHAUST VALVE**

Unscrew the cylinder (6) and pull it downwards.

Unscrew the exhaust seat (14) by holding on the valve support (17). Be careful not to lose the ball (15).

Change the seat (14) and the ball (15) if one of these two parts is damaged.

Check if the valve seal (16) is not worn or damaged. Reinstall the parts and change the seal if it is necessary.

➤ **CARTRIDGE**

Unscrew the cylinder (6) and pull it downwards.

Disassemble the piston rod (18) from the air motor by means of the axis with pin (19).

Remove the circlips (1) placed into the pump body cup (4), pull the cartridge downwards to remove it.

When reassembling :

Insert the piston rod (20) **from top to bottom** into the new cartridge (2) to avoid damaging the internal seal.

Place the whole into the pump flange (4). The cartridge(2) is equipped with a seal (3).

Fix the cartridge by means of the circlips (1). Reinstall the other parts and check if the seals are installed.

Before reassembling the different components :

- **Clean the parts with the appropriate cleaning solvent.**
- **Install new seals if it is necessary after having lubricated them with PTFE grease.**
- **Install new seals if it is necessary.**