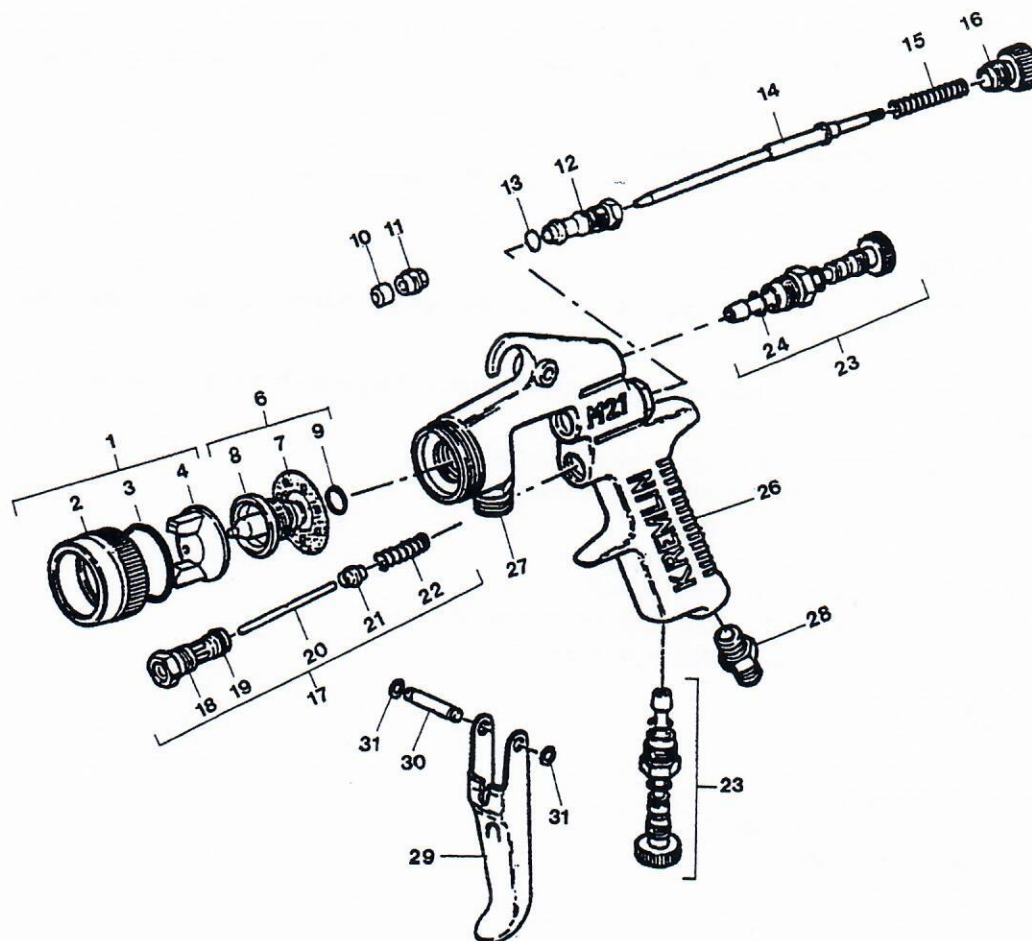



**M 21 A AIRSPRAY GUN**

DISTRIBUTED BY:  
Pro Wood Finishes  
14622 Southlawn Lane  
Rockville MD 20850  
Ph: (301) 424-3033



M 21 A AIRSPRAY GUN	Connectors			
	Fluid	M 18 x 125	M 18 x 125	M 3/8 NPS
	Air	M 1/4 NPS	M 1/4 BSP	M 1/4 NPS-NA
without projector		135.020.100	135.020.300	135.020.200
with 215 N 22		135.020.108	135.020.308	135.020.208
with 218 N 22		135.020.109	135.020.309	135.020.209
with 215 N 22 + cup		136.020.108	136.020.308	136.020.208
with 218 N 22 + cup		136.020.109	136.020.309	136.020.209

**PROJECTOR (AIR CAP ASSEMBLY + NOZZLE + NEEDLE)**

Projector	Part number	Air cap (ind. 1)	Part number	Nozzle (ind. 6)	Nozzle Ø (")	Part number	Needle (ind. 14)	Part number
209 Z 22	031.020.002	Z 22	132.020.400	209	0.035	134.020.100	207 - 209 - 212	033.200.100
212 Z 22	031.020.003	Z 22	132.020.400	212	0.047	134.020.200	207 - 209 - 212	033.200.100
215 N 21	031.020.004	N 21	132.020.200	215	0.059	134.020.300	214 - 215 - 218	033.200.400
218 N 21	031.020.005	N 21	132.020.200	218	0.071	134.020.400	214 - 215 - 218	033.200.400
215 N 22	031.020.008	N 22	132.020.100	215	0.059	134.020.300	214 - 215 - 218	033.200.400
218 N 22	031.020.009	N 22	132.020.100	218	0.071	134.020.400	214 - 215 - 218	033.200.400
222 R 21	031.020.006	R 21	132.020.300	222	0.087	134.020.600	222 - 227	033.200.700
227 R 21	031.020.007	R 21	132.020.300	227	0.106	134.020.700	222 - 227	033.200.700




# PARTS IDENTIFICATION LIST - M 21 A SPRAY GUN

Ind.	Part number	Description	Qty	Ind.	Part number	Description	Qty
* 1	<b>See projector</b>	<b>Air cap assembly</b>	1	* 23	<b>029.020.030</b>	<b>Air adjuster assembly</b>	2
2	032.020.001	• Retaining ring	1	* 24	902.202.102	• Ring	1
* 3	150.040.309	• Seal, retaining ring (x 10)	1	26	129.020.010	M 21 A gun body	1
4	N S S	• Air cap	1	27	029.020.007	Connector, fluid inlet, M 18 x 125	1
* 6	<b>See projector</b>	<b>Nozzle assembly</b>	1		029.020.008	Connector, fluid inlet, M 3/8 NPS	1
7	129.729.902	• Ring, air distribution (x 10)	1	28	050.102.624	Connector, air inlet, M 1/4 NPS	1
8	N S S	• Nozzle	1		050.102.217	Connector, air inlet, M 1/4 BSP	1
* 9	129.209.902	• O-Ring, nozzle (pack of 5)	1	29	029.020.001	Trigger	1
* 10	129.529.909	Packing (pack of 10)	1	* 30	129.029.904	Spindle, trigger (pack of 10)	1
11	029.730.102	Stuffing-box, packing	1	* 31	102.202.101	Retaining ring, Ø 5 (pack of 10)	2
12	029.020.045	Sleeve	1				
* 13	129.029.903	Seal, sleeve (pack of 10)	1				
* 14	<b>See projector</b>	<b>Needle</b>	1				
* 15	050.311.222	Spring, needle	1	*	<b>129.029.901</b>	<b>Repair kit (ind. 3, 10, 11, 15, 16, 17, 23, 30, 31)</b>	1
16	029.020.004	Fluid needle stop	1				
* 17	<b>129.056.030</b>	<b>Air valve assembly</b>	1	*	<b>129.029.902</b>	<b>Package of seals (ind. 3, 7, 9, 10, 19, 21, 24, 31)</b>	1
18	N S S	• Seat, valve	1				
* 19	150.040.322	• Seal (pack of 10)	1				
20	029.020.022	• Rod, valve	1				
* 21	129.739.910	• Air valve (pack of 10)	1				
22	050.311.221	• Spring, valve	1				

\* preceding the index number denotes a suggested spare part

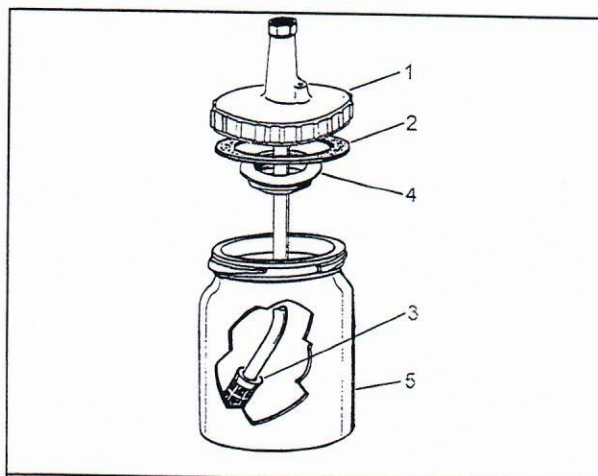
N S S : denotes parts are not serviceable separately

## ON REQUEST

	Handle valve with gauge and fitting :	<b>Part number</b>
	<ul style="list-style-type: none"> <li>• F 1/4 BSP</li> <li>• F 1/4 NPS</li> </ul>	150.070.510 150.070.530

Nozzles (treated steel)	209 T	134.025.100
	212 T	134.025.200
	215 T	134.025.300
	218 T	134.025.400
	222 T	134.025.600
	227 T	134.025.700
Needles (treated steel)	207 T – 209 T – 212 T	033.205.100
	215 T – 218 T	033.205.400
	222 T – 227 T	033.205.700
Needles (acetal resin)	207 P – 209 P – 212 P	033.020.910
	215 P – 218 P	033.020.930
	222 P – 227 P	033.020.940

## SM 6 SUCTION CUP



Ind.	Description	Part number
-	<b>SM 6 suction cup assembly</b>	
	• with connector, F 18 x 125	<b>138.350.000</b>
	• or connector, F 3/8 NPS	<b>138.360.000</b>
1	Lid and tube assembly	
	• with connector, F 18 x 125	138.350.200
	• or connector, F 3/8 NPS	138.360.200
2	Seal (pack of 10)	138.010.900
3	Filter screen (pack of 4)	138.310.300
4	Drip free system (pack of 5)	138.350.901
5	Cup with clamp attachment	138.350.100